

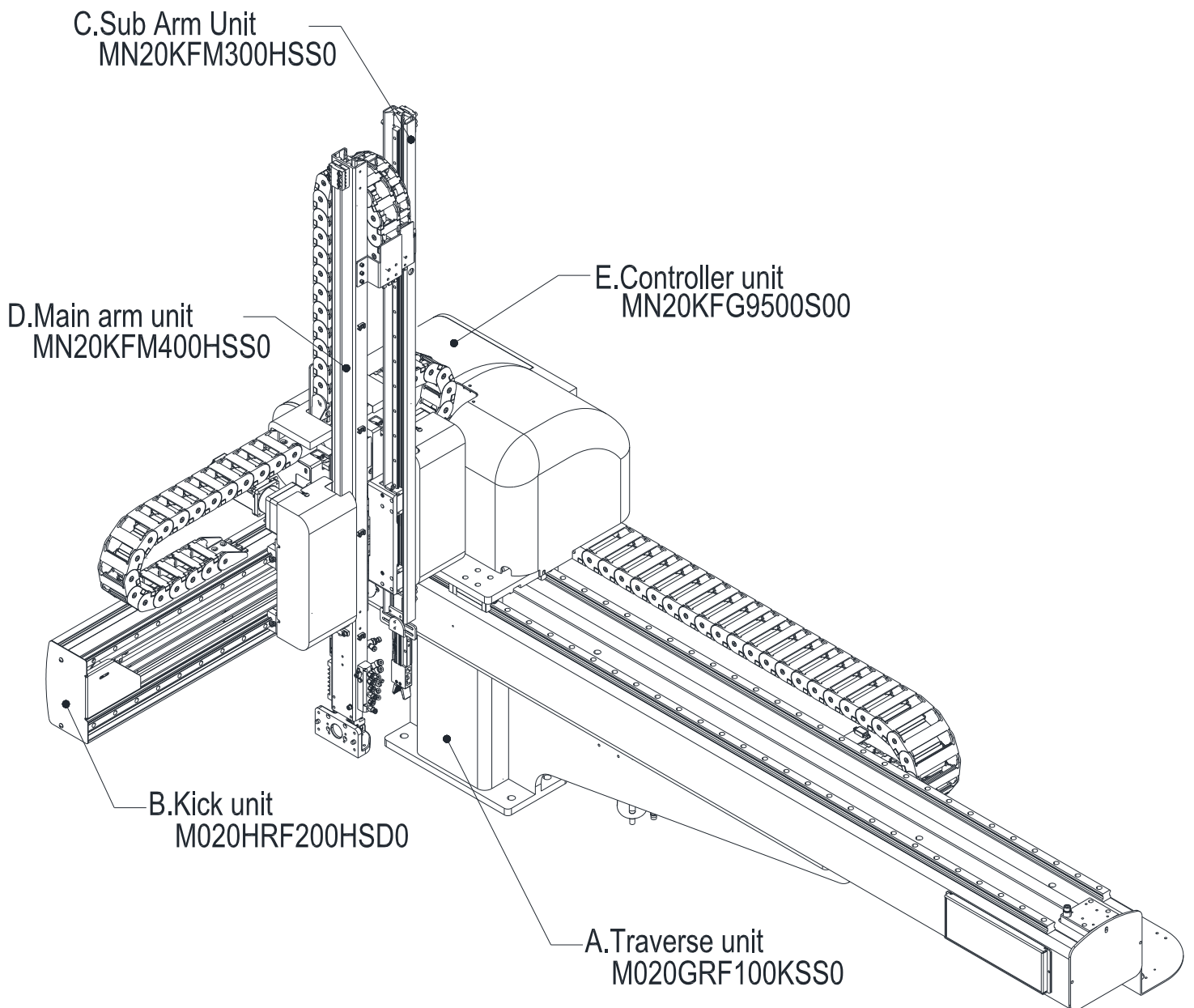
PARTS CATALOG

TAKE-OUT ROBOT

- ZEST-200D (MN20KFM000WSS0)

Ver. 1.0

**ZEST-200D
(MN20KFM000WSS0)**

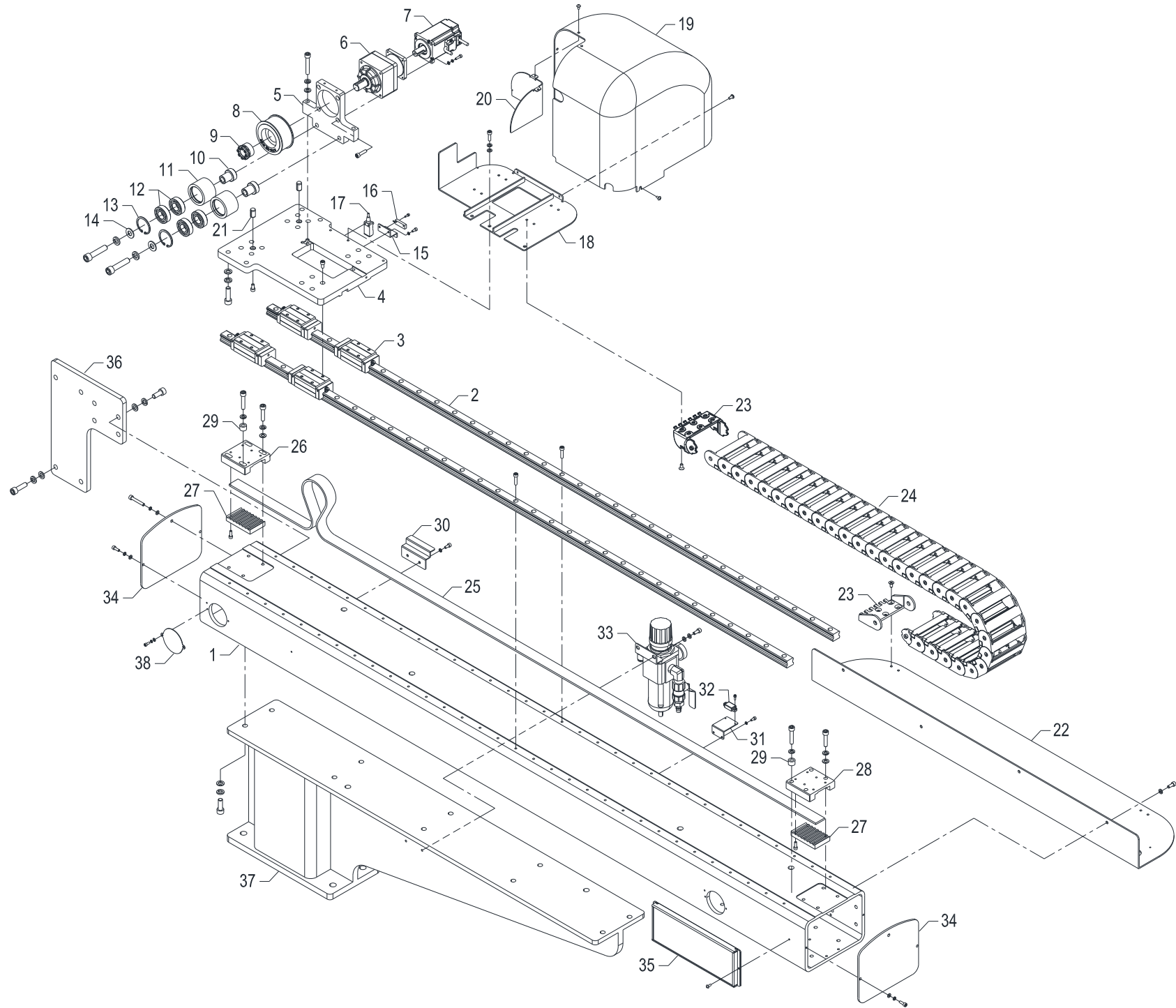


Contents

A. Traverse unit (M020GRF100KSS0)	4
B. Kick unit (M020HRF200HSD0)	6
C. Sub_Arm unit (MN20KFM300HSS0)	8
D. Main_Arm unit (MN20KFM400HSS0)	10
F. Controller unit (MN20KFG9500S00)	12

- 이책의 내용에 관해서는 향후 예고 없이 변경될 수 있습니다.
- 이 책에 기재되어 있는 데이터는, 이 기계에 관계된 참고 데이터로서 기재된 것이며 법적 책임을 가지고 있는 것은 아닙니다.
- 고객측의 개조, 분해, 오용 및 설치 환경 부족 등, 당사가 관여할 수 없는 상황에서 발생하는 손실에 관한 책임은 지지 않습니다.
- 당사에서는 이 장치의 운용을 이유로 하는 손실, 잘못된 이익 등의 청구에 관해서는 어떠한 책임도 질 수 없다는 것을 양해해 주십시오.
- 이 책의 모든 저작권은 한양로보틱스(주)에 귀속됩니다. 이 책 내용의 전체 또는 일부를 당사의 허가 없이 복제, 복사, 전재(全載)하는 일은 저작권 및 출판사의 권리를 침해하는 일입니다.

A. Traverse unit (M020GRF100KSS0)

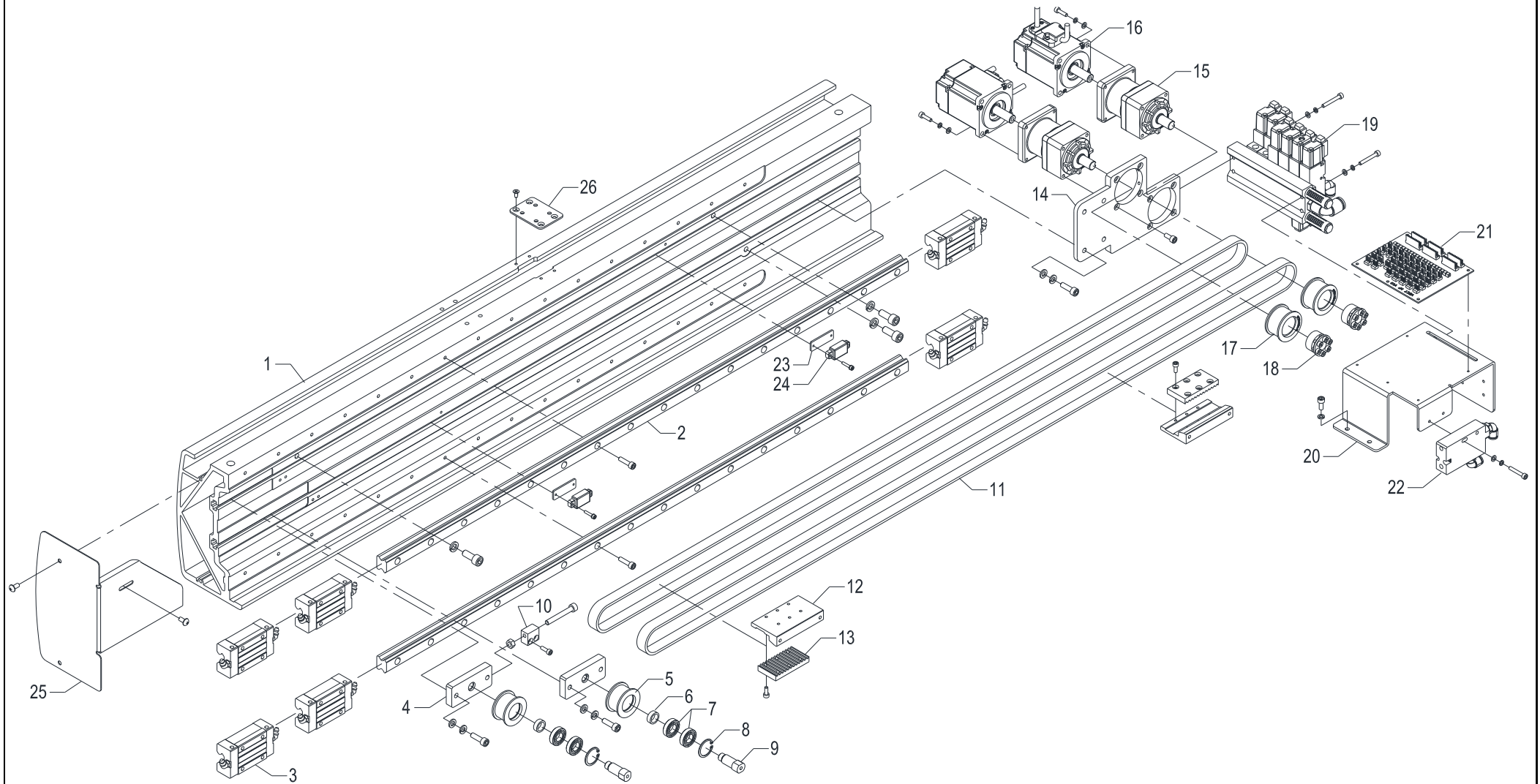


A. Traverse unit (M020GRF100KSS0)

No.	PARTS No.	PARTS NAME	Q'TY	REMARKS
A-1	M020GRF1001PW0	Base	1	
A-2	PLMRSHS251900L	LM rail	2	
A-3	PLMBSHS25RKZ18	LM block	4	
A-4	MN20KFG1012ZZ0	LM base	1	
A-5	MN20KFG1004ZZ0	Motor bracket	1	
A-6	PRESSFS9CPB048	Reducer	1	
A-7	PMTBMA401N2TN5	Servo motor	1	
A-8	MN20KFA4012ZZ0	Timing pulley	1	
A-9	PPLMMA19338888	Power lock	1	
A-10	M040DAA1007ZZ0	Collar	2	
A-11	M015MAB2010MC0	Idle roller	2	
A-12	PBRA6004ZZ8888	Bearing	4	
A-13	PRGH042H888888	Snap ring	2	
A-14	M040DAA1008ZZ0	Washer	2	
A-15	M030SBB1017MC0	Bracket	1	
A-16	PSSMRS1SH88888	Magnet sensor	1	
A-17	PSSRHYP18S5NAF	Sensor	1	
A-18	MN20KFH1014ZZ0	Lower Plate	1	
A-19	M040KJG1015MD0	Cover	1	
A-20	MN20KFG2032ZZ0	Box Plate	1	
A-21	PMXPMSTH122088	Pin	2	
A-22	MN20KFA1003ZZ0	Cableveyor plate	1	
A-23	PCVE4504300088	Cableveyor end bracket	1	
A-24	PCVH4504B09588	Cableveyor link	29	
A-25	PBLTA103008888	Timing belt	2310	
A-26	M015MAB1004ZZ0	Gripper block	1	
A-27	M015MAB1002MC0	Gripper	2	
A-28	M015MAB1009ZZ0	Gripper block	1	
A-29	M015MAB1016ZZ0	Block	2	
A-30	M015MAB1007ZZ0	Bracket	1	
A-31	M015MAB1018MC0	Bracket	1	
A-32	PSSMRS52SHC888	Magnet	1	

No.	PARTS No.	PARTS NAME	Q'TY	REMARKS
A-33	PAXSTAW4000ASY	Filter regulator	1	
A-34	MN20KFG1025ZZ0	Bracket	2	
A-35	MXAKAAB1000000	Counter	1	
A-36	MN08KFA1021PW0	Plate	1	
A-37	M020KJH1002PW0	Body	1	
A-38	MXAKAAB1004ZZ	Cover		

B. Kick unit (M020HRF200HSD0)

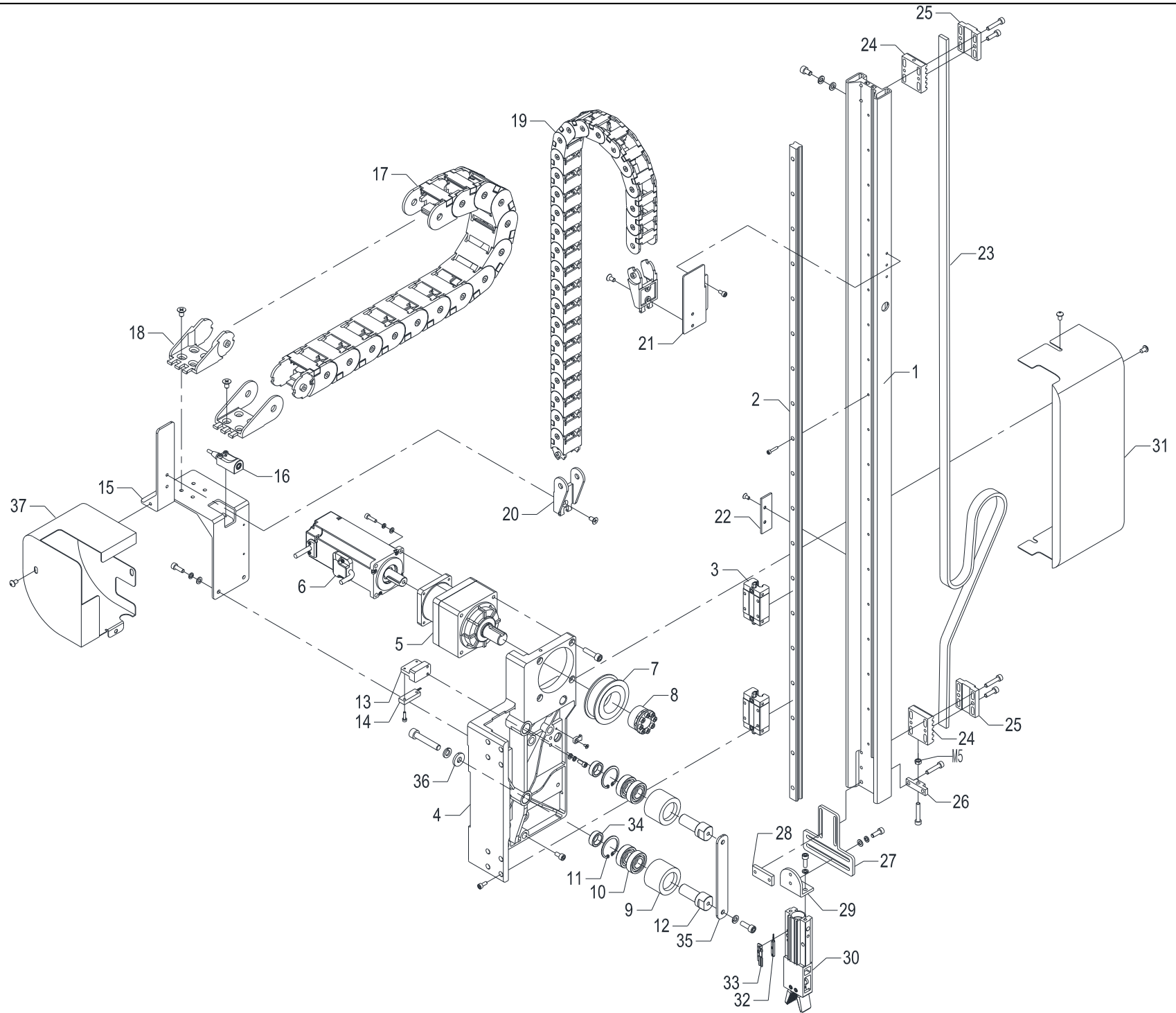


B. Kick unit (M020HRF200HSD0)

No.	PARTS No.	PARTS NAME	Q'TY	REMARKS
B-1	M020KJG2001MCXA	File	1	
B-2	PMLRHGR20R1000	LM rail	2	
B-3	PLMBQHH20CA888	LM block	6	
B-4	MN20KFG2045ZZ0	Roller block	2	
B-5	MN20KFA2043ZZ0	Idle roller	2	
B-6	M035HAA2044ZZ0	Collar	2	
B-7	PBRA6901ZZ8888	Bearing	4	
B-8	PRGH024H888888	Snap ring	2	
B-9	MN20KFA2042ZZ0	Shaft	2	
B-10	MN20KFG2047ZZ0	Tension block	1	
B-11	PBLTU5M1588888	Timing belt	2	
B-12	MN20KFG4032ZZ0	Belt plate	2	
B-13	MN20KFG2031MC0	Belt gripper	2	
B-14	MN20KFG2015ZZ0	Motor plate	1	
B-15	PRESSF5BPB0288	Reducer	2	
B-16	PMTBMA201N2TN5	Servo motor	2	
B-17	MN20KFA2040ZZ1	Pulley	2	
B-18	PPLMMA12268888	Power lock	2	
B-19	MN20KFG2100000	Solenoid valve unit	1	
B-20	MN20KFG2029ZZ0	Solenoid valve plate	1	
B-21	PBDCIFVECT8888	Board	1	
B-22	PAXVAV015HS888	Vacuum pump	1	
B-23	M015MAB2035MC0	Nut key	2	
B-24	PSSMRS52SHC888	Magnet	2	
B-25	MN20KFG2021ZZ0	Cover	1	
B-26	MN20KFG2008ZZ0	Bracket	1	

No.	PARTS No.	PARTS NAME	Q'TY	REMARKS

C. Sub_Arm unit (MN20KFM300HSS0)

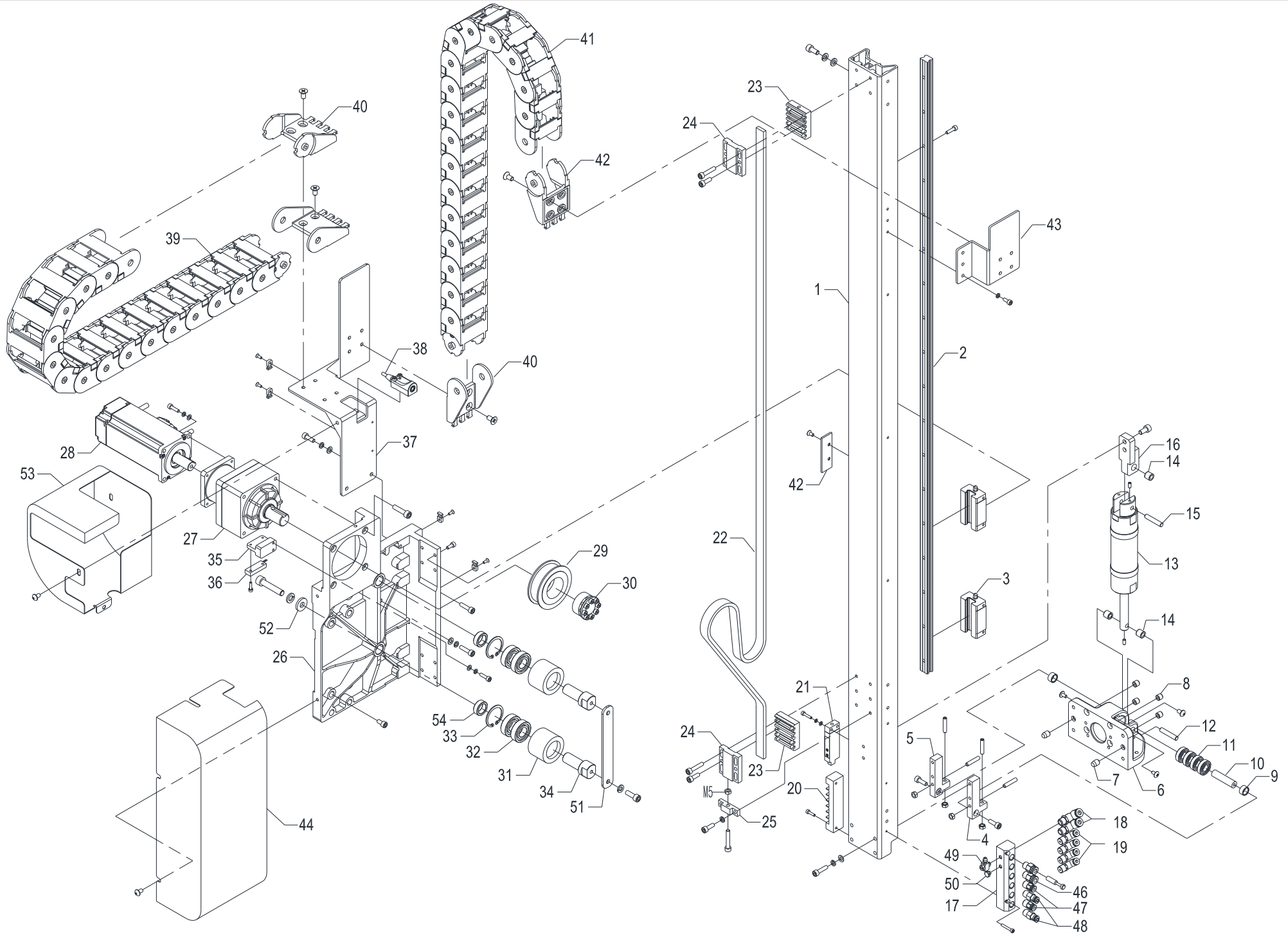


C. Sub_Arm unit (MN20KFM300HSS0)

No.	PARTS No.	PARTS NAME	Q'TY	REMARKS
C-1	MN20KFG3002MC0	File	1	
C-2	PMLREGR15R1120	LM rail	1	
C-3	PLMBQEH15CA888	LM block	2	
C-4	MN20KFG3001ZZXC	LM plate	1	
C-5	PRESSF5CPB0488	Reducer	1	
C-6	PMTBMA401A2TN6	Servo motor	1	
C-7	MN08KFA4012ZZ0	Timing pulley	1	
C-8	PPLMMA19338888	Power lock	1	
C-9	M015MAB3011ZZ0	Roller	2	
C-10	PBRA6002ZZ8888	Bearing	4	
C-11	PRGH032H888888	Snap ring	2	
C-12	MN20KFG3035ZZ0	Bearing holder	2	
C-13	MN20KFG4041ZZ0	Bracket	1	
C-14	PSSMRS1SH88888	Sensor	1	
C-15	MN20KFG3034ZZ0	Cableveyor fixed bracket	1	
C-16	PSSRHYP18S5NAF	Sensor	1	
C-17	PCVH4501B07588	Cableveyor link	15	
C-18	PCVE4501300088	Cableveyor end bracket	1	
C-19	PCVH3202307588	Cableveyor link	26	
C-20	PCVE3202300088	Cableveyor end bracket	1	
C-21	MN20KFG3023ZZ0	Cableveyor Bracket	1	
C-22	MN20KFG4039ZZ0	Bracket	1	
C-23	PBLTU8M1588888	Timing belt	1520	
C-24	MN20KFG4033MC0	Belt gripper	2	
C-25	MN20KFG4016ZZ0	Gripper block	2	
C-26	MN20KFG4044ZZ0	Tension block	1	
C-27	MN20KFG3009ZZ0	Gripper bracket	1	
C-28	MN20KFG3010ZZ0	Gripper nut	1	
C-29	MS55AT34005ZC0	Gripper bracket	1	
C-30	PAXAHYCITYPE88	Hy air chuck(I-type)	1	
C-31	MN20KFG3042ZZ0	Cover	1	
C-32	PSSMSHYCDA9388	Auto switch	1	

No.	PARTS No.	PARTS NAME	Q'TY	REMARKS
C-33	MS55AT44302ZZ0	Sensor bracket	1	
C-34	MN20KFG4036ZZXA	Collar	2	
C-35	MN20KWH4050ZZ0	Plate	1	
C-36	M020GRE4051ZZ0	Washer	2	
C-37	MN20KFG3051ZZ0	Cover	1	

D. Main_Arm unit (MN20KFM400HSS0)

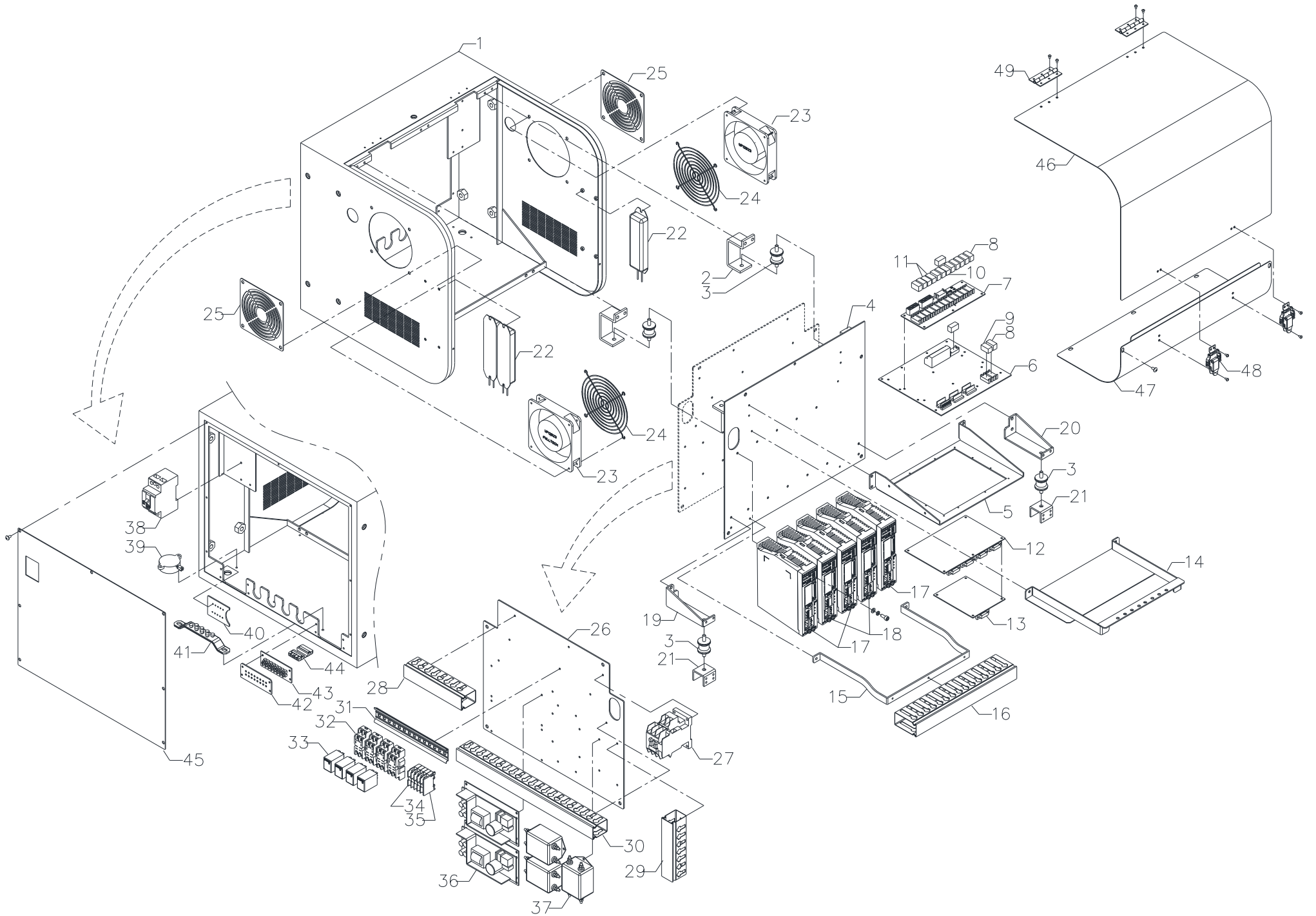


D. Main_Arm unit (MN20KFM400HSS0)

No.	PARTS No.	PARTS NAME	Q'TY	REMARKS
D-1	MN20KFG4002MC0	File	1	
D-2	PMLREGR15R1070	LM rail	1	
D-3	PLMBQEH15CA888	LM block	2	
D-4	MN20DAA5003ZB0	Plate fix block	1	
D-5	MN20DAA5004ZB0	Plate fix block	1	
D-6	MN20KFG4003MC0	Plate	1	
D-7	M035HAA5012ZZ0	Pin	2	
D-8	MN20KFG4047ZZ0	Pin	4	
D-9	MN20KFG4006ZZ0	Collar	2	
D-10	MN20KFG4007ZZ0	Pin	1	
D-11	PBRA6900ZZ8888	Bearing	4	
D-12	PMXPSFJ6328888	Shaft	1	
D-13	PAXA0082320588	Bracket	1	
D-14	PBRNFJ69ZZ8888	Roller bearing	3	
D-15	M035HAA5009MC0	Pin	1	
D-16	MN20KFG4043ZZ0	Bracket	1	
D-17	M020HFB5018ZZ0	Air Block	1	
D-18	PAXFEL06180888	Fitting	4	
D-19	PAXFEL04180888	Fitting	2	
D-20	PTLA07P8888888	Terminal	1	
D-21	PAXVPS6102VNAM	Sensor	1	
D-22	PBLTU8M1588888	Timing belt	1440	
D-23	MN20KFG4033MC0	Belt gripper	2	
D-24	MN20KFG4016ZZ0	Gripper block	2	
D-25	MN20KFG4044ZZ0	Tension block	1	
D-26	MN20KFG4001MCXC	LM bracket	1	
D-27	PRESSF5CPB0488	Reducer	1	
D-28	PMTBMA401A2TN6	Servo motor	1	
D-29	MN08KFA4012ZZ0	Timing pulley	1	
D-30	PPLMMA19338888	Power lock	1	
D-31	M015MAB3011ZZ0	Roller	2	
D-32	PBRA6002ZZ8888	Bearing	4	

No.	PARTS No.	PARTS NAME	Q'TY	REMARKS
D-33	PRGH032H888888	Snap ring	2	
D-34	MN20KFG3035ZZXA	Bearing holder	2	
D-35	MN20KFG4041ZZ0	Bracket	1	
D-36	PSSMRS1SH88888	Magnet sensor	1	
D-37	MN20KFG4034ZZ0	Cableveyor fixed bracket	1	
D-38	PSSRHYP18S5NAF	Sensor	1	
D-39	PCVH4502307588	Cableveyor link	16	
D-40	PCVE4502300088	Cableveyor end bracket	1	
D-41	PCVH4501B07588	Cableveyor link	17	
D-42	PCVE4501300088	Cableveyor end bracket	1	
D-43	MN20KFG4023ZZ0	Cableveyor bracket	1	
D-44	MN20KFG4039ZZ0	Bracket	1	
D-45	MN20KFG4042ZZ0	Cover	1	
D-46	PAXFEC06180888	Fitting	2	
D-47	PAXFEC04188888	Fitting	2	
D-48	PAXFQSK1804888	Fitting	2	
D-49	PAXFBUULM56888	Fitting	1	
D-50	PAXFBBPM588888	Plug	1	
D-51	MN20KWH4050ZZ0	Plate	1	
D-52	M020GRE4051ZZ0	Washer	2	
D-53	MN20KFG4051ZZ0	Cover	1	
D-54	MN20KFG4036ZZXA	Collar	2	

E. Controller unit (MN20KFG9500S00)



본사 (Head Office & Factory)

인천광역시 서구 보도진로 41번길 9 (가좌동) (우:404-811)
TEL : 032-582-5040, 032-582-5046
FAX : 032-584-7040
WWW.HYROBOT.COM

HANYANG ROBOTICS CO., LTD
9, Bodojin-Ro 41 Beon-Gil, Seo-Gu, Incheon, Korea (404-811)
TEL : +82-32-582-5040, +82-32-582-5046
FAX : +82-32-584-7040
WWW.HYROBOT.COM

HYROBOTICS CORP.
5988 Mid Rivers Mall Dr. Saint Charles. MO 63304. USA
TEL : 1-636-578-6059
FAX : 1-866-232-5594
WWW.HYROBOT.COM

