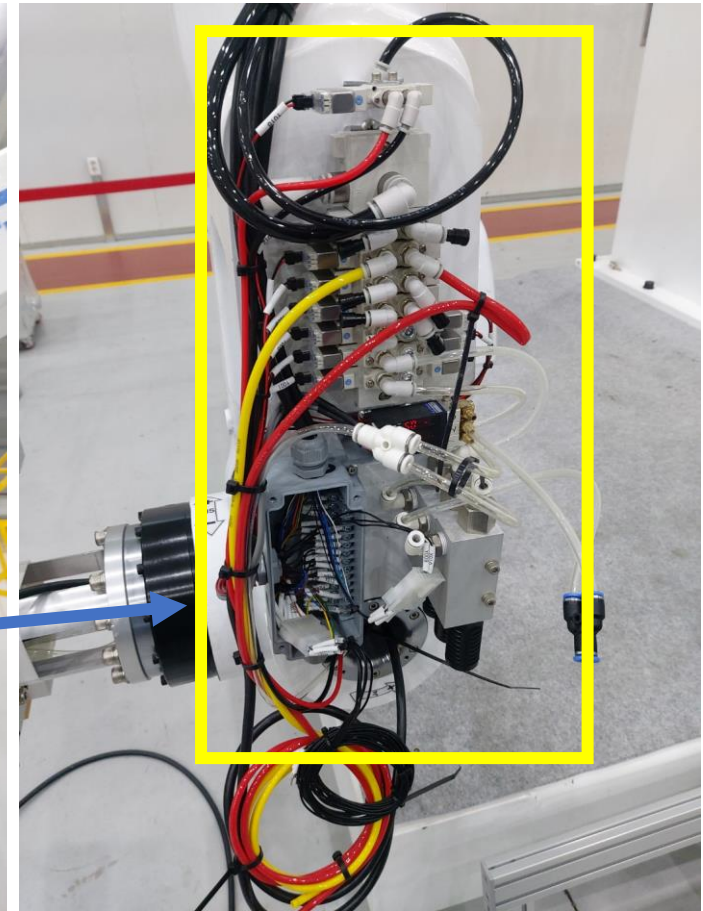
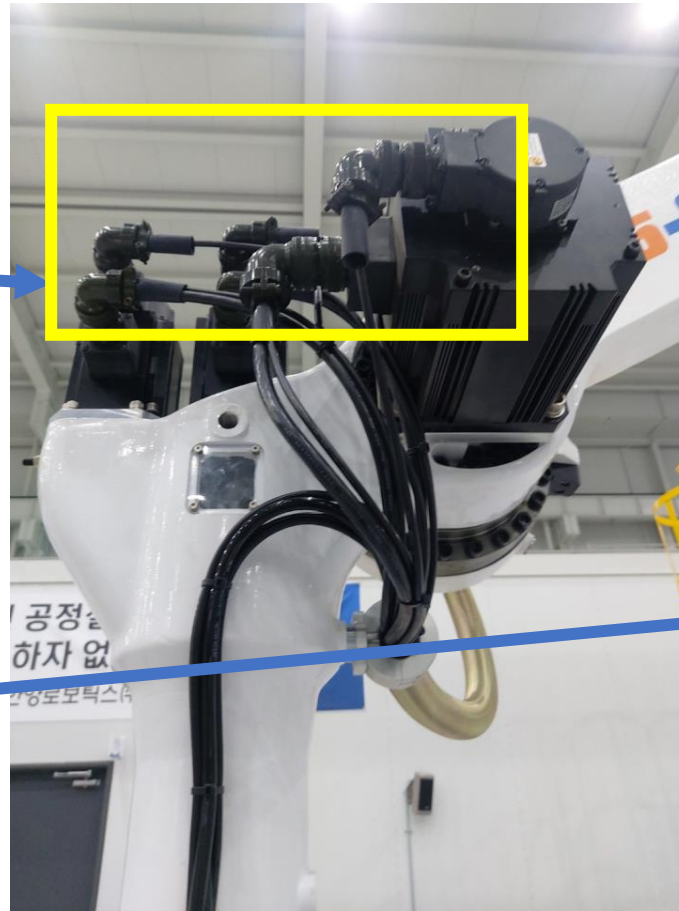
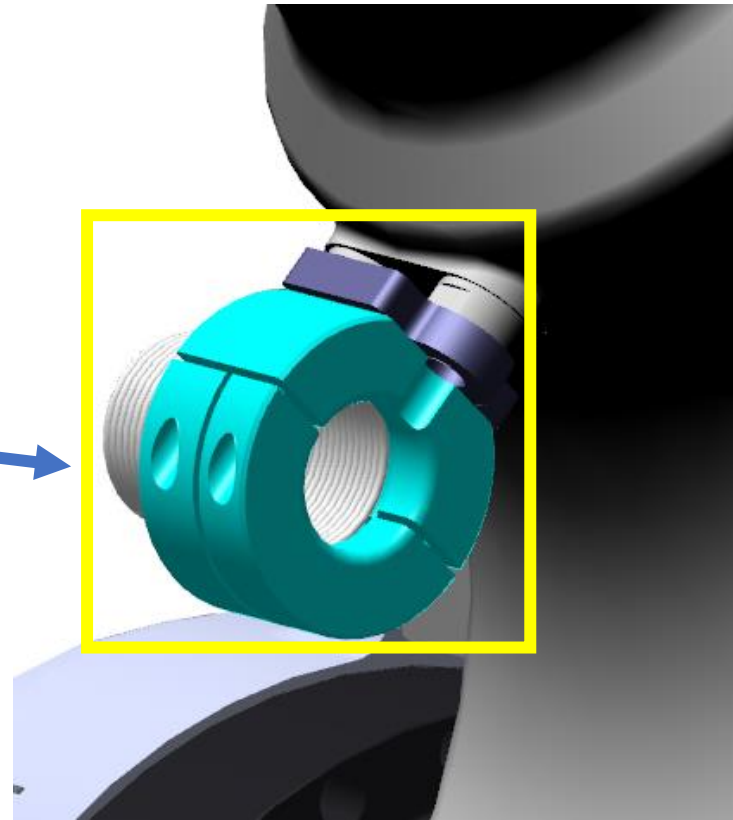


H5 O-Ring Replacment Manual (J3)

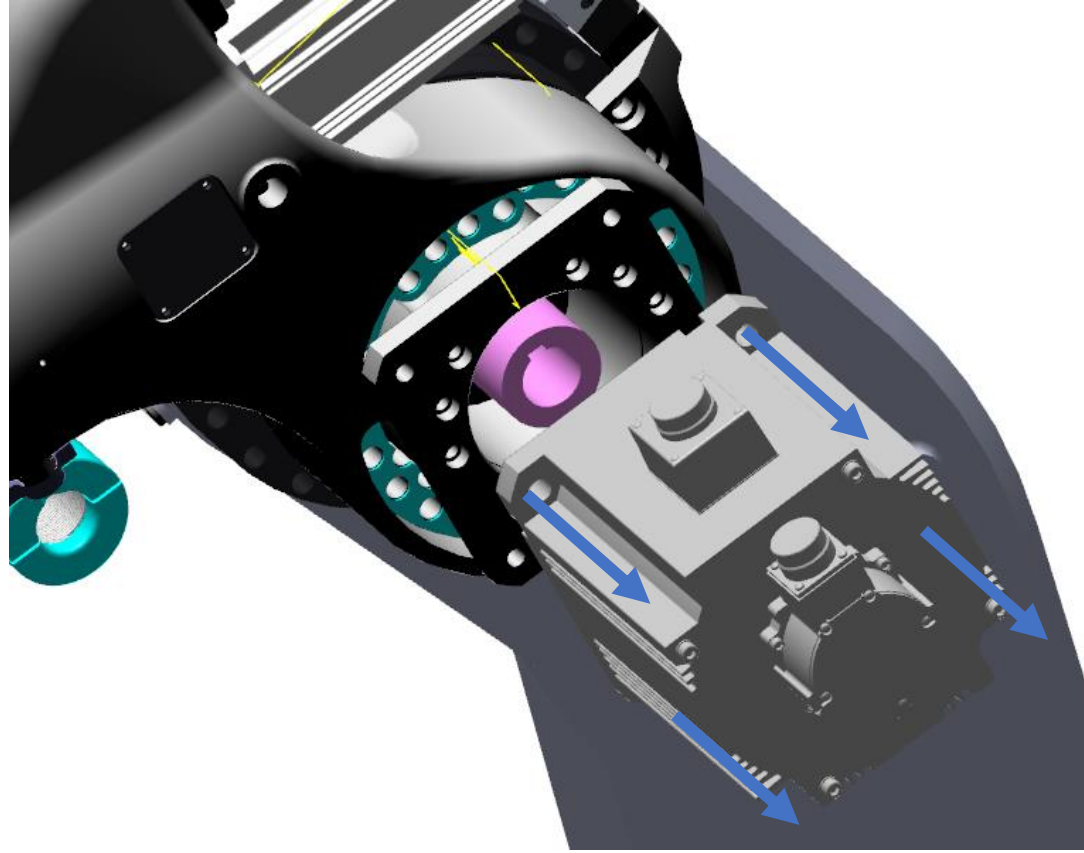


Disconnect the various cables and hoses to prevent damage.

※ Caution : It is also recommended to disconnect EOAT.

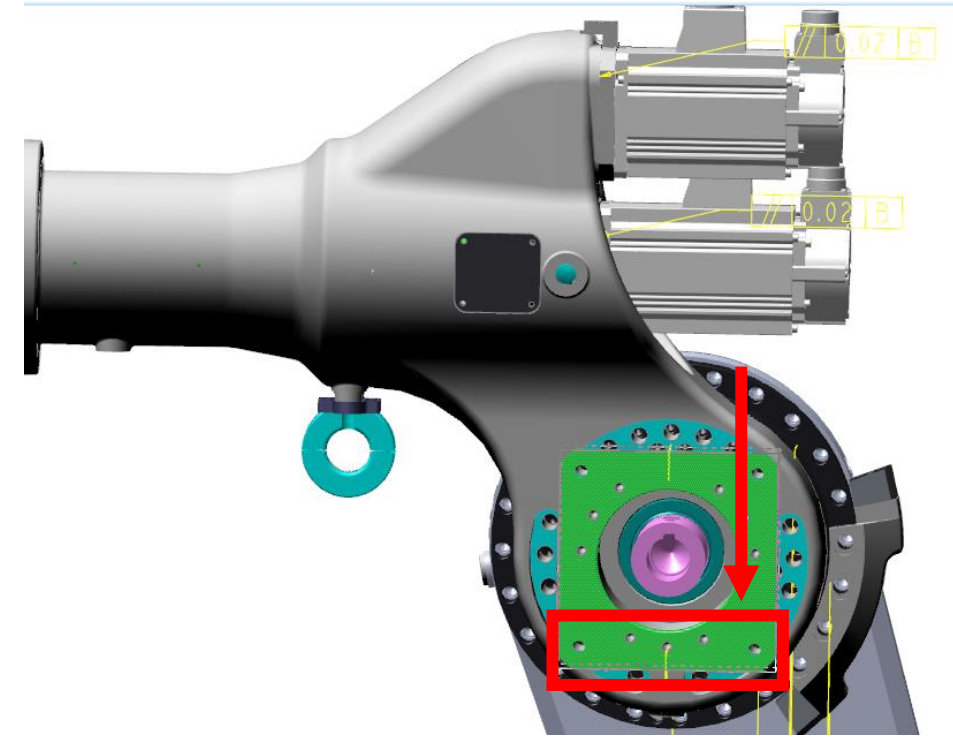
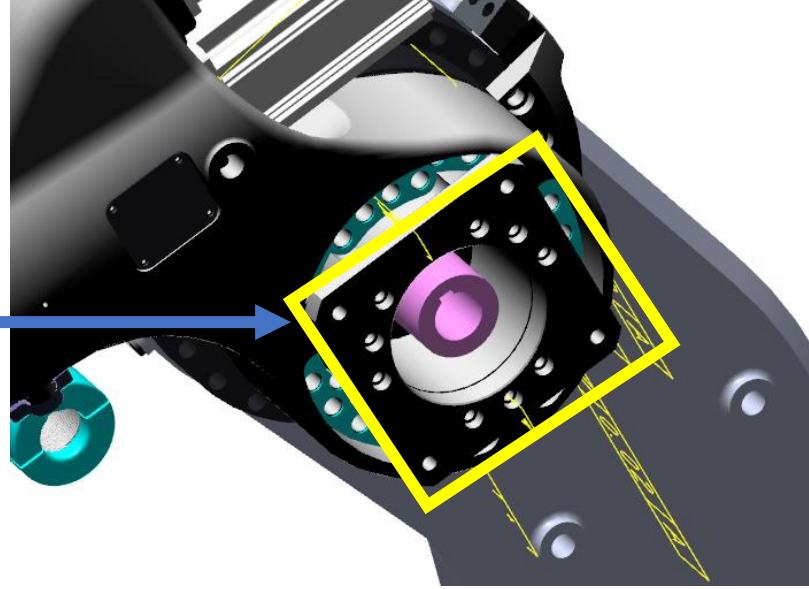


Separate the coil spring bracket to prevent damage.



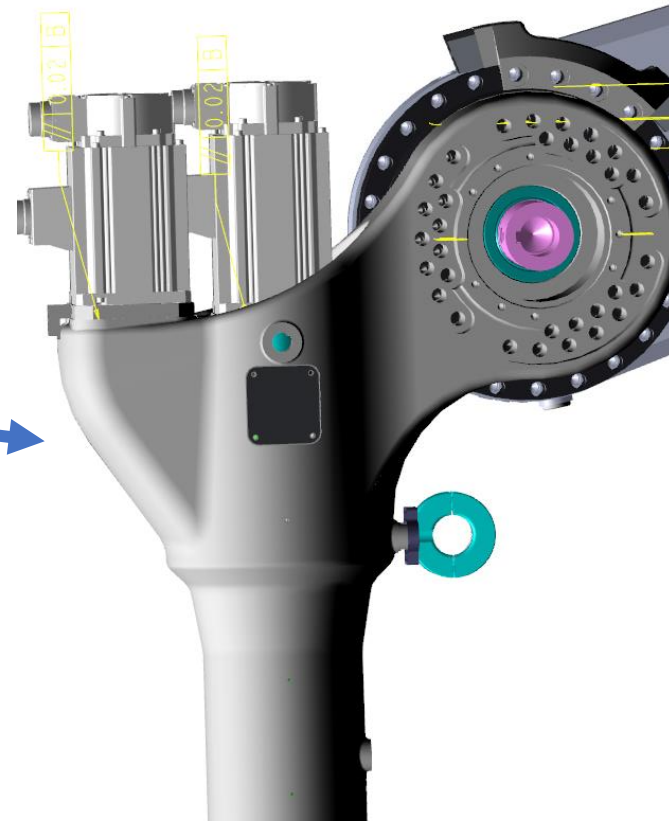
Separate the motor (internal bearings also separate when the motor is separated).

※ Caution : There is a risk of the casting falling, so use eye bolt and secure it before proceeding (refer to the left photo marked area)."

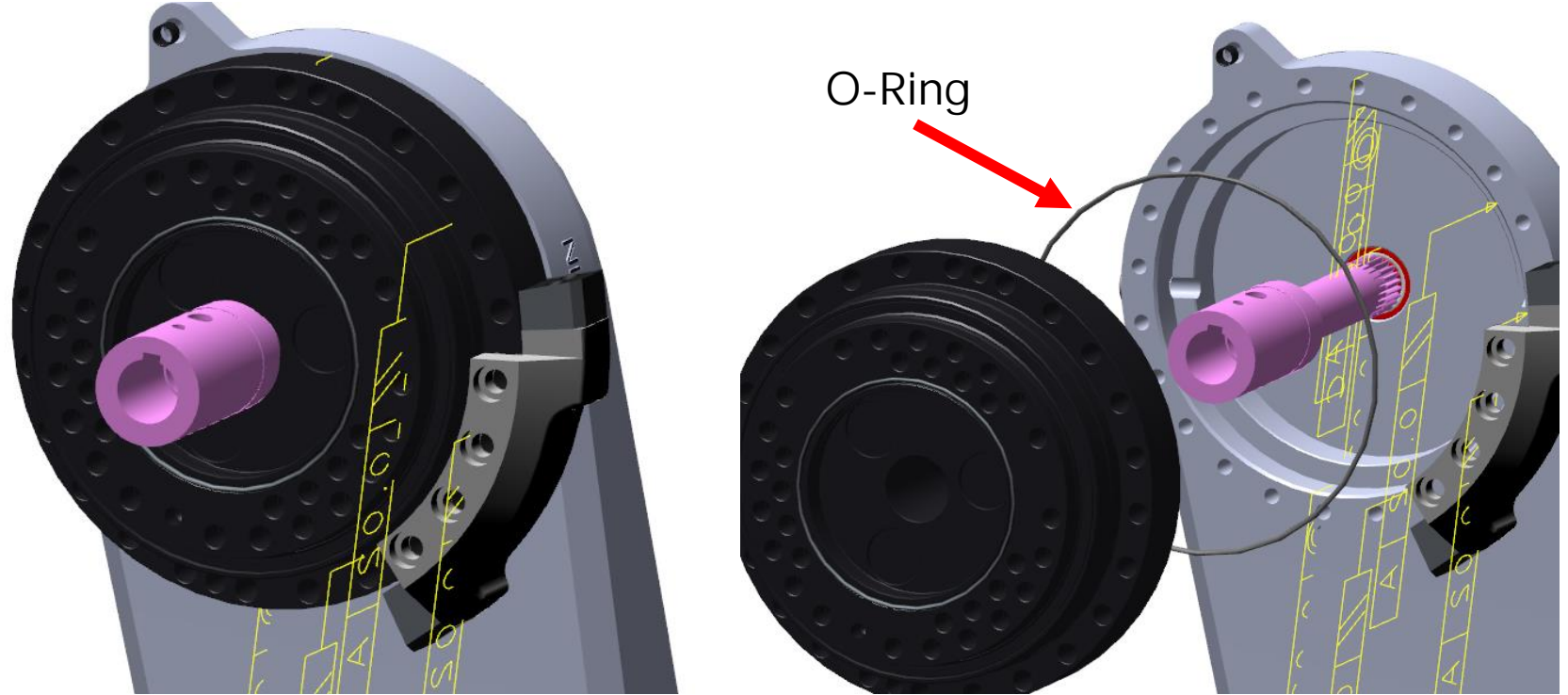


Separate the motor attachment plate.

※ 주의사항 : When assembling, the marked area of the plate must face downwards relative to the casting reference point (refer to the right photo marked area) - the direction where there are three holes positioned between the motor bolts.



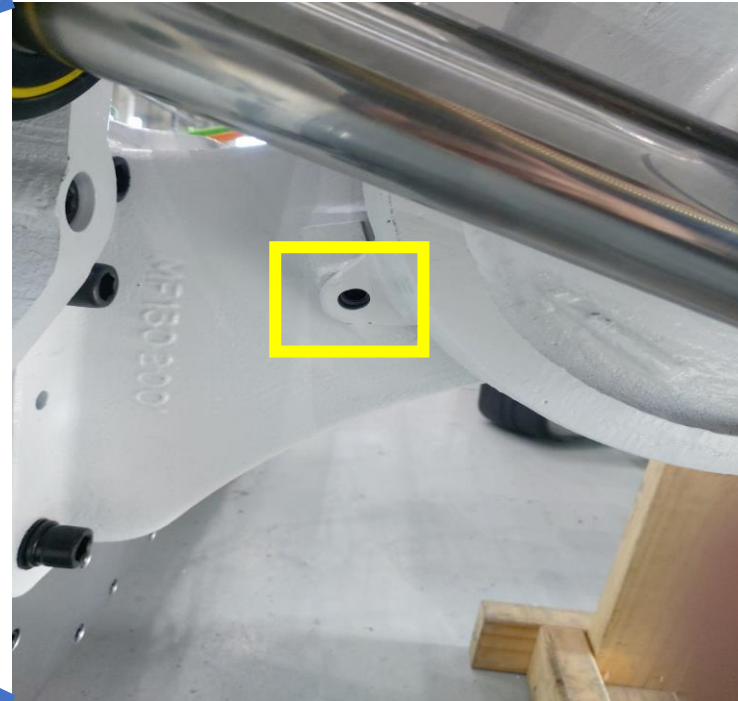
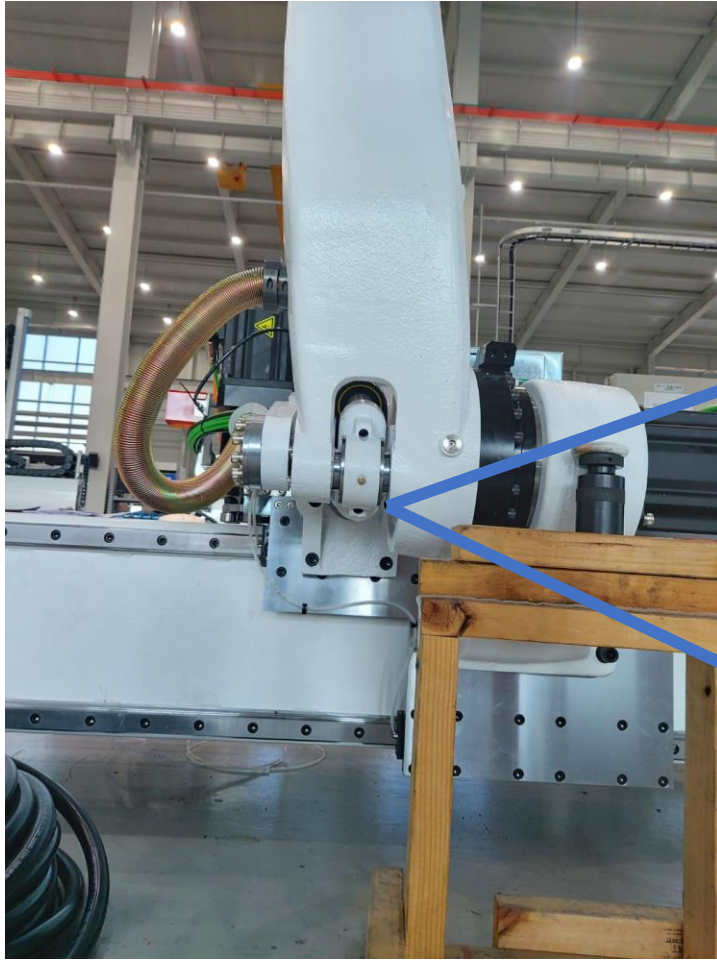
Disassemble the casting.



Remove the gearbox and replace the O-ring.

※ Caution: Be careful when removing and attaching the gearbox to avoid damaging the O-ring.

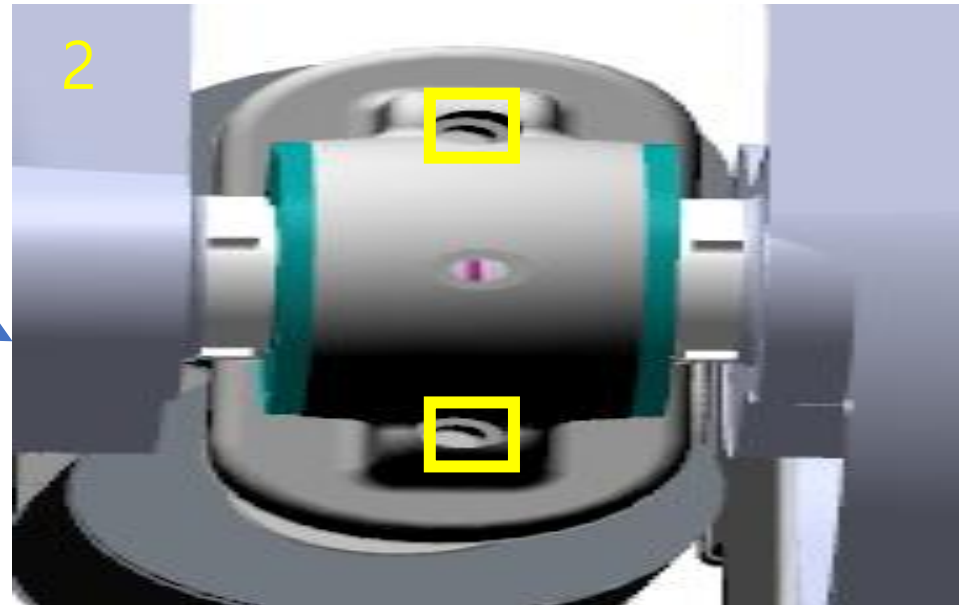
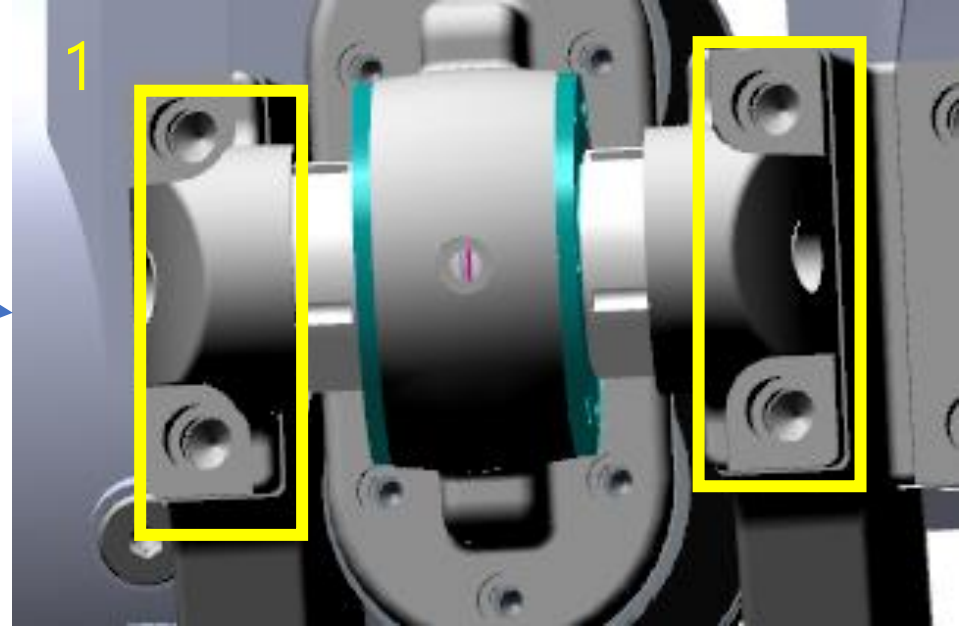
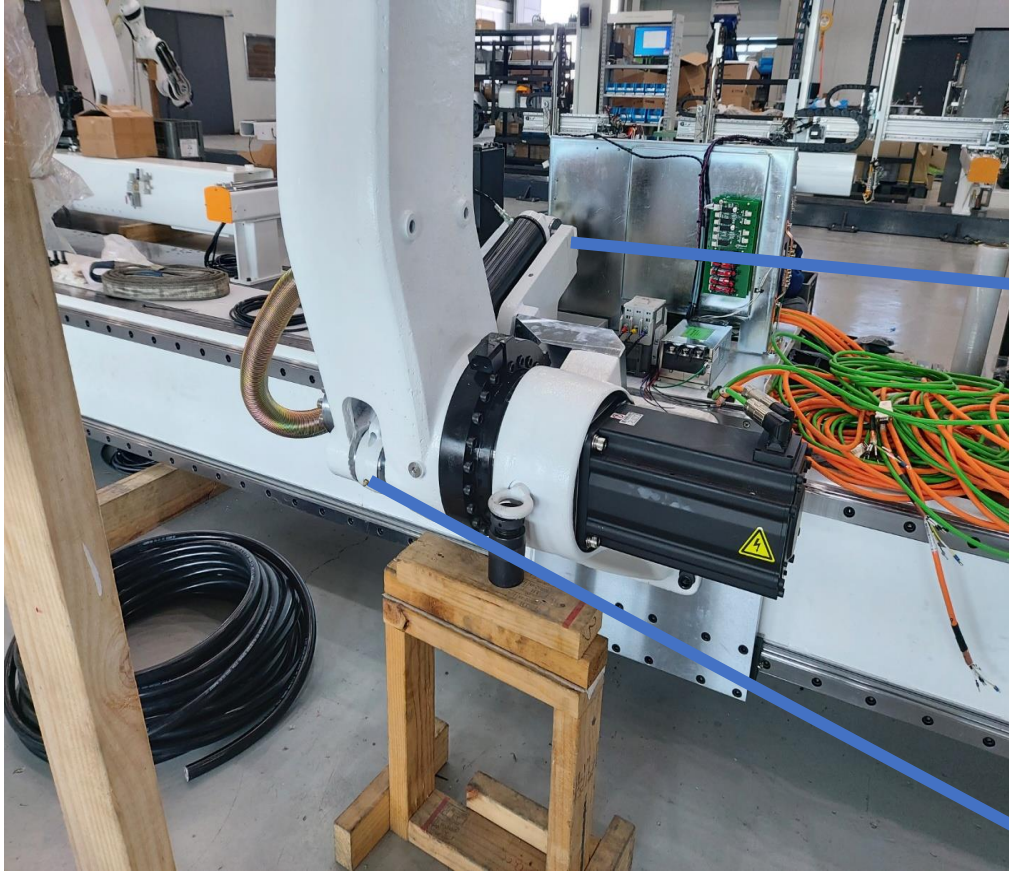
H5 O Ring Replacement Manual (J2)



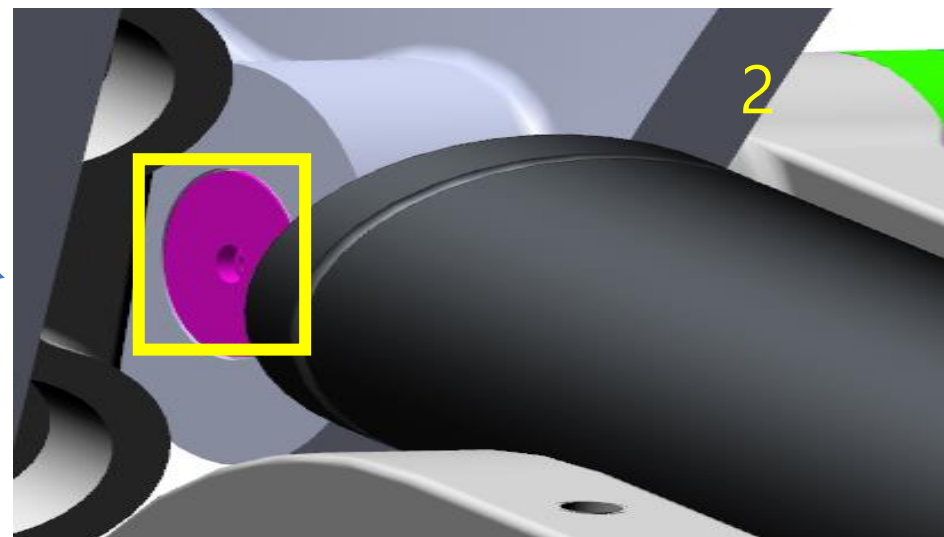
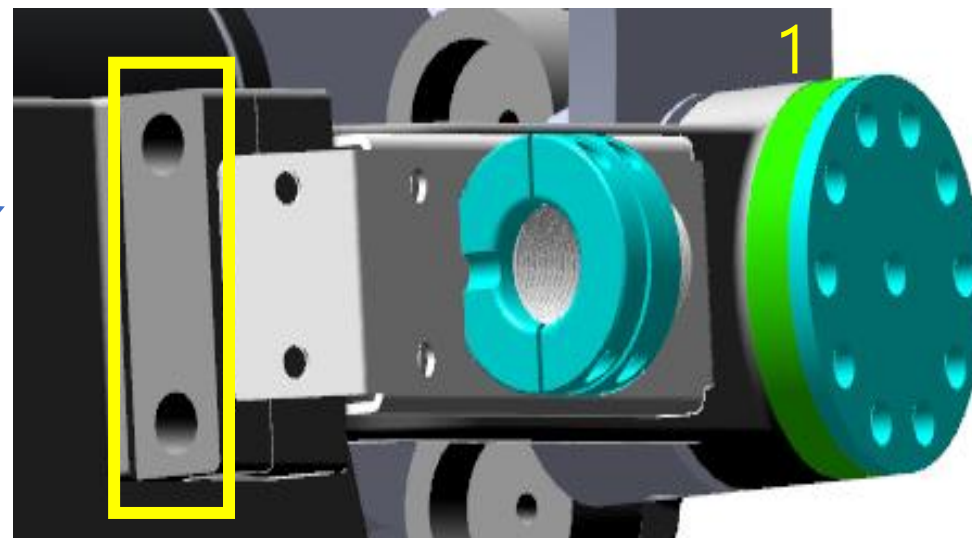
J2 Zeroing using a zeroing pin.



Secure the eye bolt for robot arm support and fix the hoist as shown in the picture above.

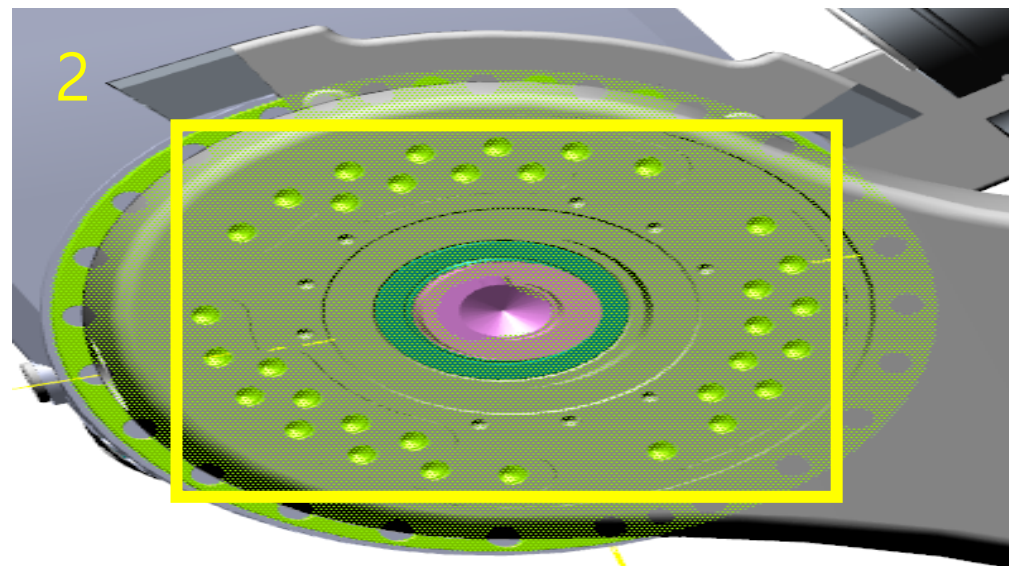
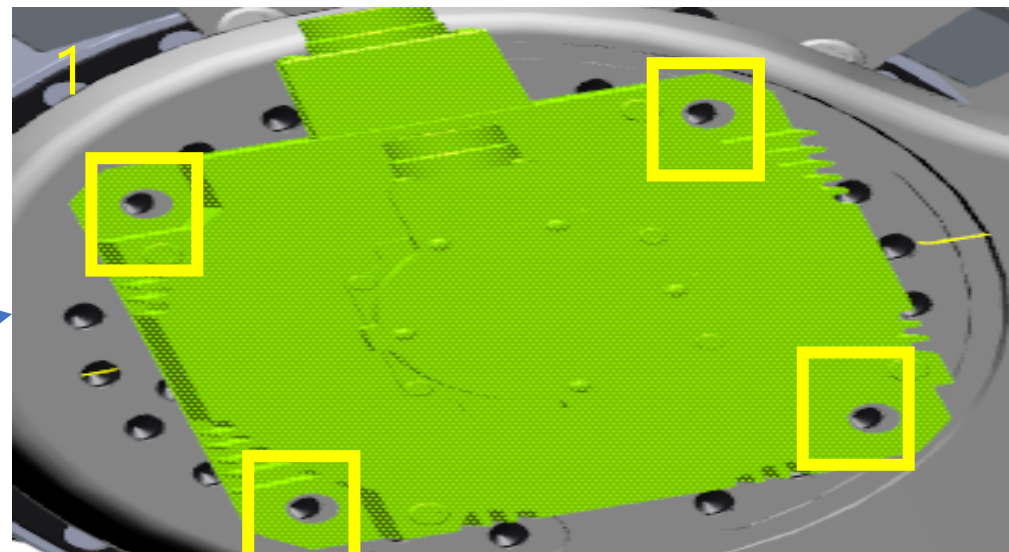


First, remove the 4 bolts in picture 1, then proceed to remove the 2 bolts in picture 2.



Remove the bolts sequentially from the marked areas in pictures 1 and 2.

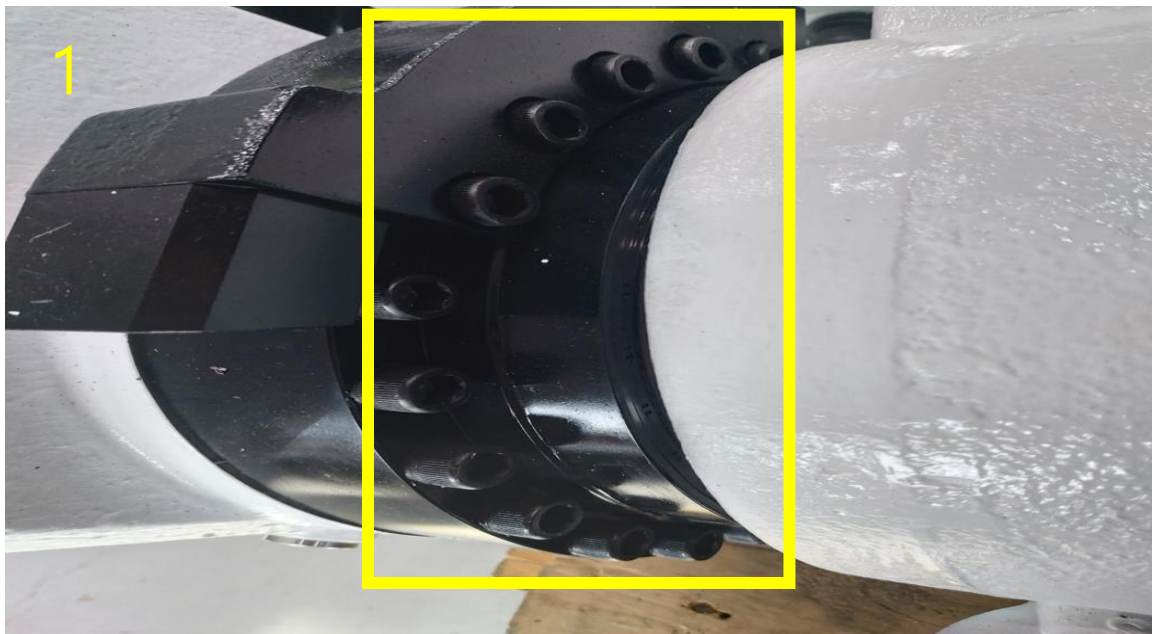
When assembling, be sure to fully tighten the bolts in picture 2 (picture 2 is located on the inside of the robot).



"After removing the 4 motor bolts in picture 1, remove the motor.

Then, remove the 33 indicated bolts in picture 2 and proceed with the removal."

Caution: When removing, be cautious to prevent the gearbox from slipping out and potentially falling



"After removing the bolts in picture 1, proceed to replace the O-ring."

"Caution: When attaching the gearbox, make sure to align the rotational marks in picture 2 with the attachment point in picture 3."