

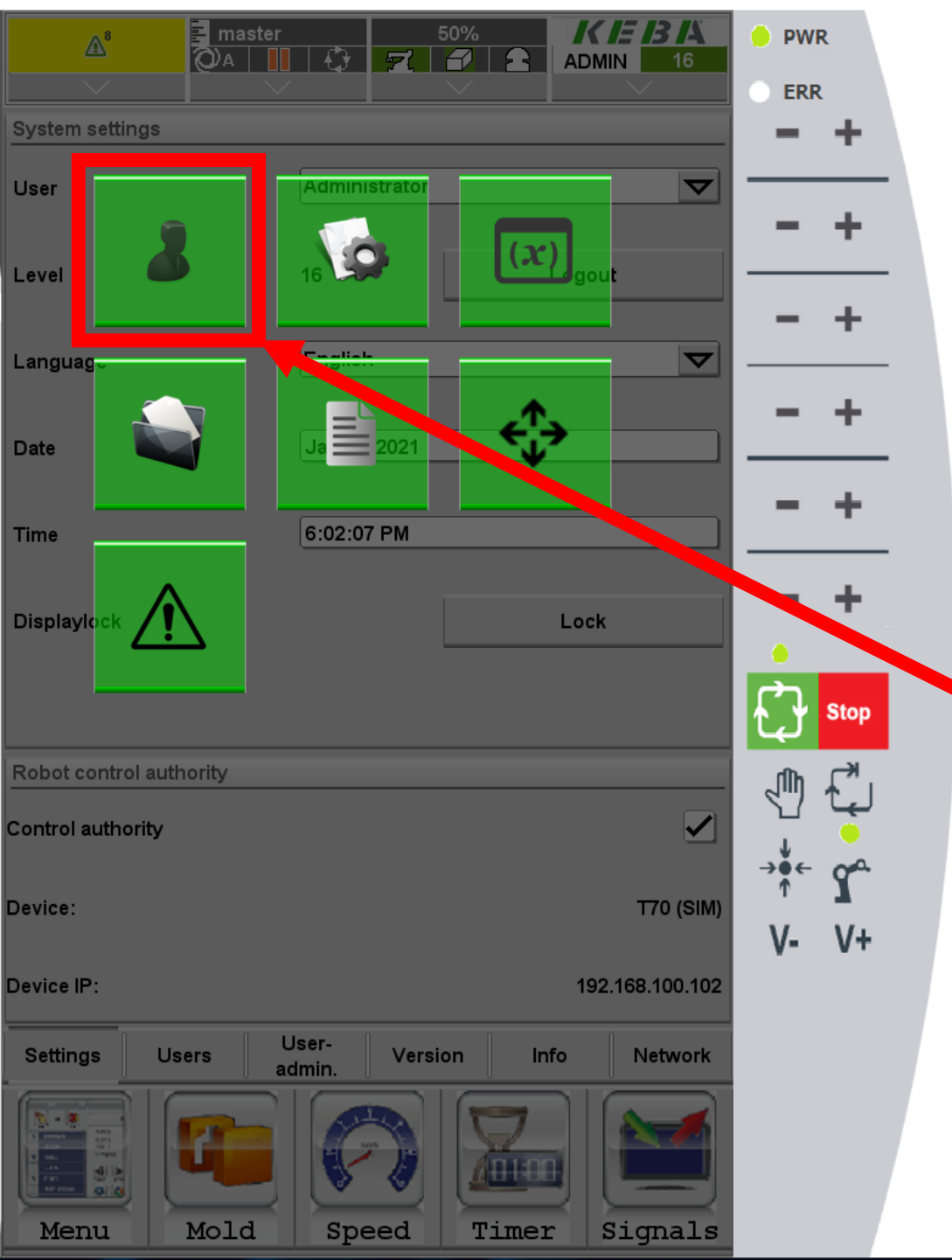
HOW TO CHANGE STROKE LIMITS

EPIK / UNIK





Log in as Level 16,
Administrator



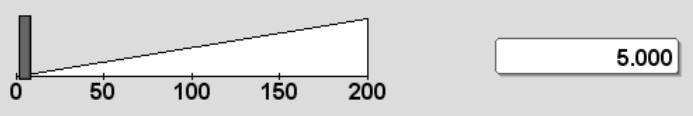
Press menu button twice to see hidden menu

Press this button

Configuration data

	Actual pos.	Home pos.	Min. pos.	Max. pos.
x [mm]	0.000	0.000	-30.000	1,500.000
y [mm]	290.000	290.000	0.000	450.000
z [mm]	0.000	0.000	0.000	800.000

Homing tolerance [mm]



Use servo switch off

Switch off time ms

You can change Max or Min position values.

CAUTION

Always back up the files first before you editing them

1. **After the modification, you must run test drive at low velocity.**
2. **This modification applies to every mold files.**
3. **This modification may cause accident or damage.**
Always be cautious.

If you have any questions, email us at sales@hyrobotics.com