

EPIK / UNIK PROGRAM BACKUP MANUAL

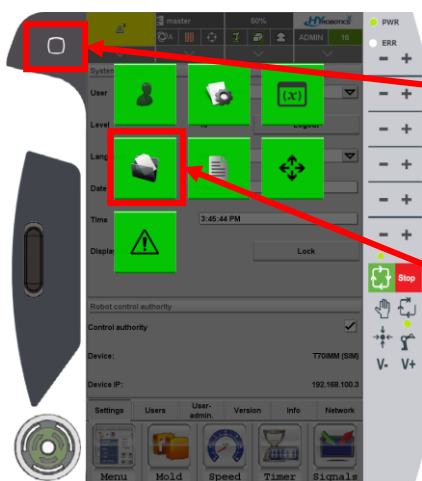
BY USING USB THUMB DRIVE

1. Turn on the robot
2. Log in level 16 administrator
3. Connect USB drive to the teaching pendant.



* USB file system **must be FAT32** type

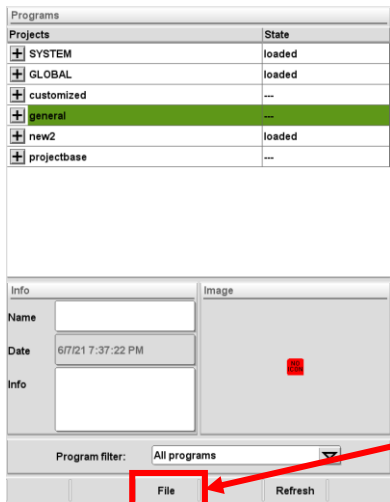
4. Open program manager



Double press

Program manager

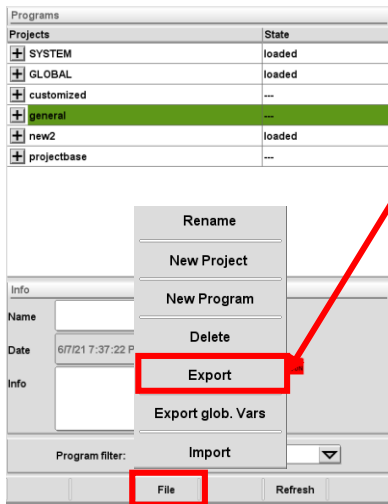
5. Select the mold file you want to back up, and press FILE button



* Currently loaded mold file **CANNOT** be backed up. If you want to back up current loaded file, press **CLOSE** button first.

FILE button

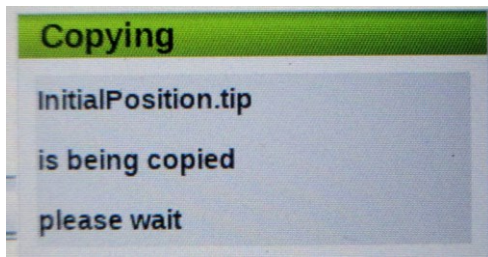
6. Press EXPORT , select KETOP and check mark.



EXPORT button



7. Back up processing...



8. <mold file name> .tt folder is created in USB drive.
Back up completed.

EPIK / UNIK PROGRAM RESTORE MANUAL

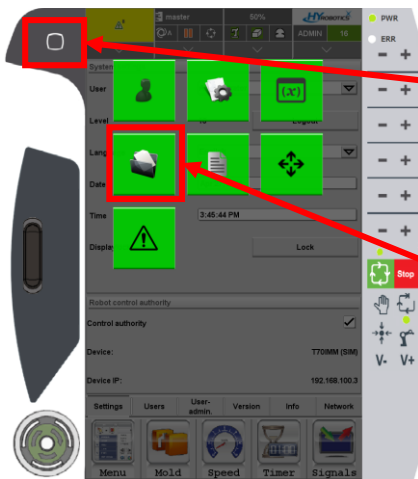
BY USING USB THUMB DRIVE

1. Turn on the robot
2. Log in level 16 administrator
3. Connect USB drive to the teaching pendant.



* USB file system **must be FAT32** type

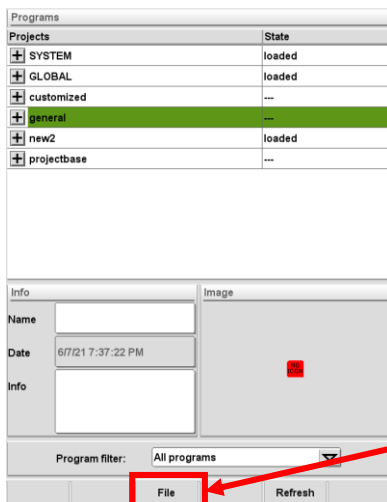
4. Open program manager



Double press

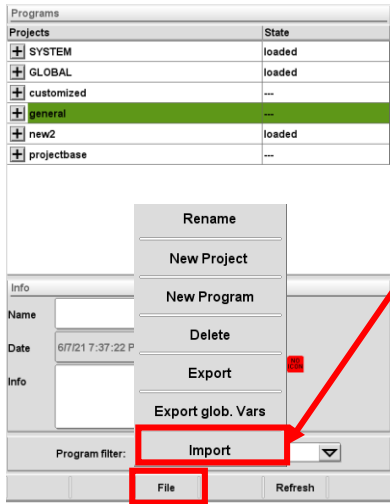
Program manager

5. Press FILE button



FILE button

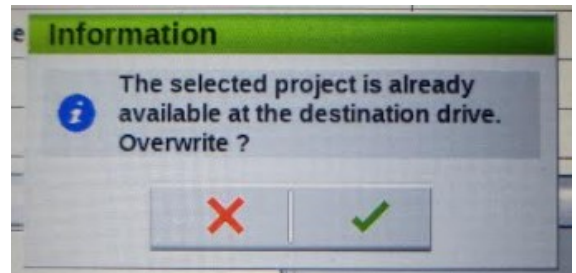
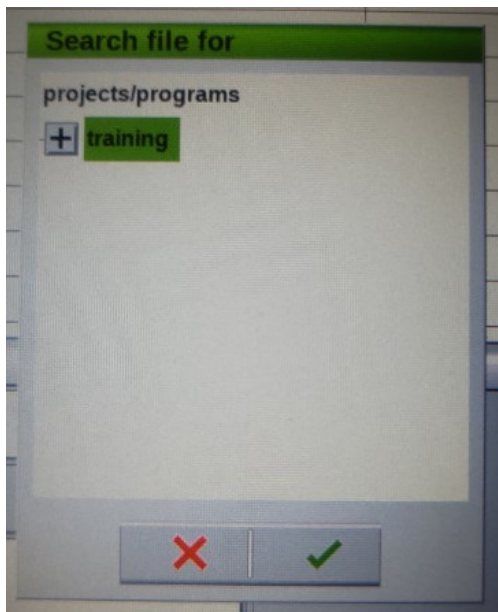
6. Press **IMPORT** , select **KETOP** and check mark.



IMPORT button



7. Select the mold file and press check mark



* If this message pops up, make sure if you want to overwrite the current mold file.

8. The restore has been completed when you see this message.

