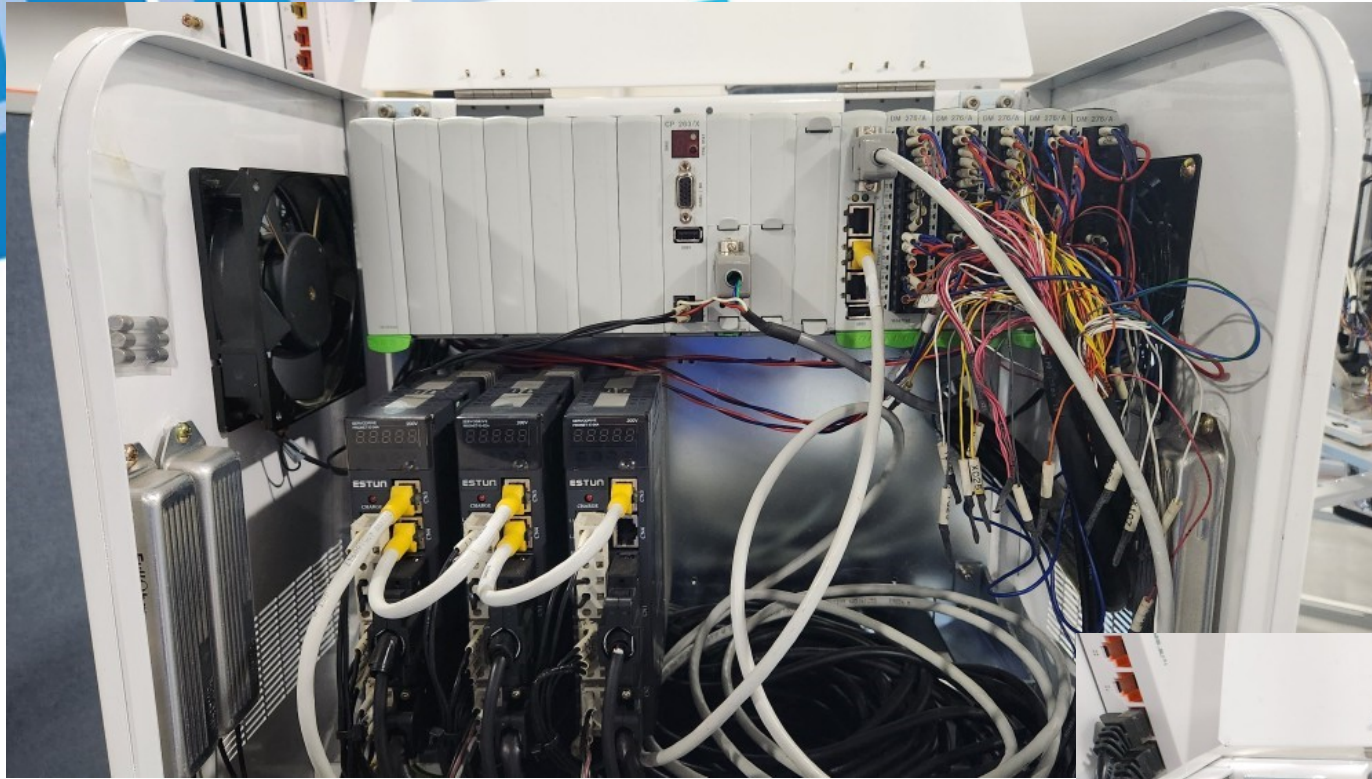


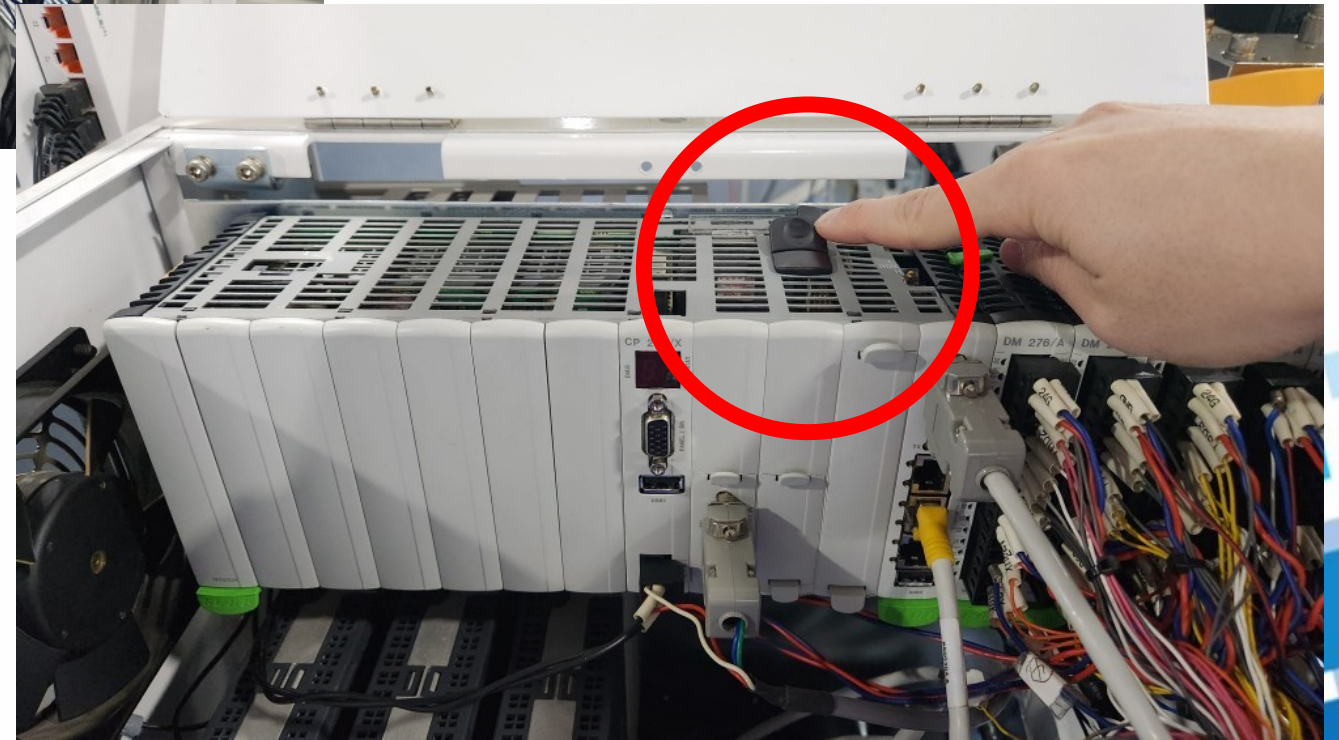


[EPIK & UNIK]

Full Robot Data Backup



1. Power Off the robot
2. Open the control box
3. Find a button on the top of the PLC












1. Press the button
2. Take out the CF memory card





**Connect it to PC / laptop
with a reader device.**

This is full robot data.
Copy all of files, and paste them to your
PC / laptop.
You can also create a clone memory card
with a new one.

Name	Date modified	Type	Size
 application	12/20/2021 9:53 AM	File folder	
 protocol	12/20/2021 9:53 AM	File folder	
 system	12/20/2021 9:53 AM	File folder	
 systemsettings	12/20/2021 9:53 AM	File folder	
 terminal	12/20/2021 9:53 AM	File folder	
 PmaData.bin	3/6/2018 10:54 PM	ALZip BIN File	8,192 KB
 ProcessData.csv	12/17/2021 6:58 PM	Microsoft Excel C...	63 KB

After backing up all data,
insert the memory card back to the PLC,
and power on the robot.

The memory card has a specific direction.
There is a risk of damaging the PLC if the
card is forced in with excessive force.