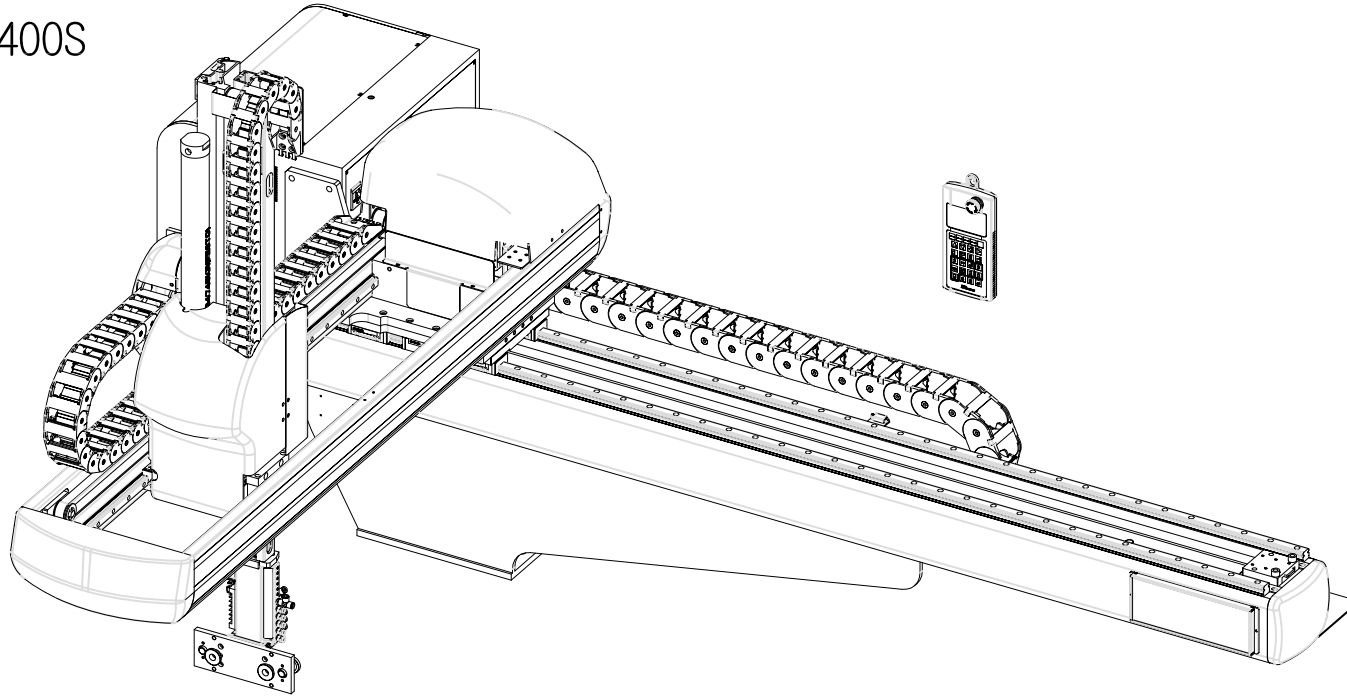


Total Assembly


VECT-400S



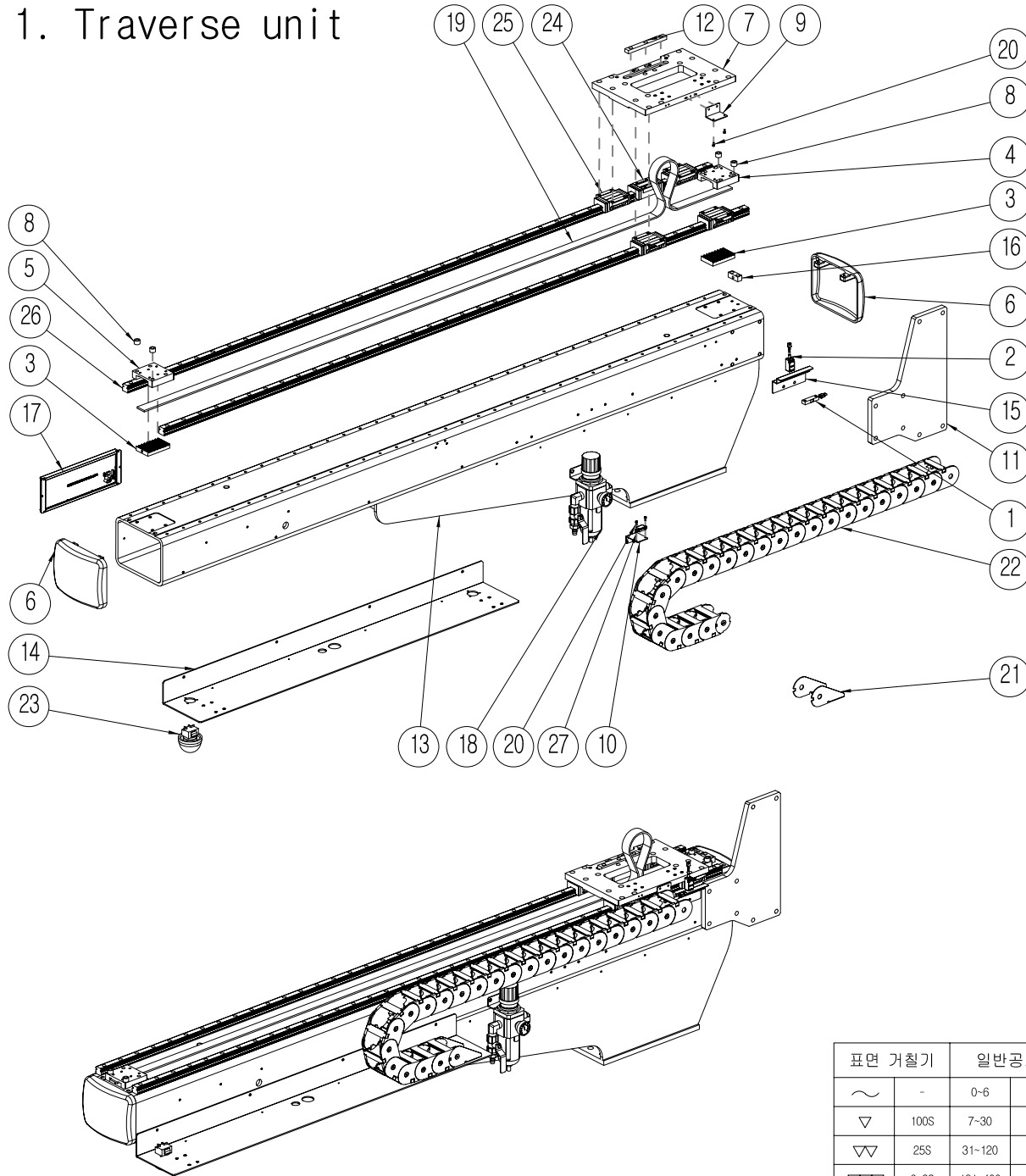
NO.	REVISIONS	DATE	APPROVE	REMARK
1				

11	POWER_CABLE	PECPCA20E04408	2	PANASONIC		MFMA0020EED-4.4
10	ENCODER_CABLE	PECE20EAM04408	2	PANASONIC	.	MFECA0020EAM-4.4
9	FIX_PIN_SET	M060HFA5100000	2	.	.	
8	기준핀	M060HFA5008ZZ0	2	SM45C		
7	JIG_PLATE	M060HFA5007ZZ0	1	A6061		.
6	Controller_unit	M020EFA9200000	1	.	.	PANASONIC
5	PENDANT_ASSY	M020FFA8100000	1	.	.	VECT
4	Rotation unit	M040FJA5000000	1	.	.	.
3	Main arm unit	M040FJA4000000	1	.	.	.
2	Kick unit	M040EJA2000000	1	.	.	.
1	Traverse_unit	M040FJA1000000	1	.	.	.
NO	DESCRIPTION	DRAWING NO	Q'TY	MATERIAL	FINISH	REMARK

표면	거칠기	일반공차
~	-	0-6 ±0.1
▽	100S	7-30 ±0.2
▽▽	25S	31-120 ±0.3
▽▽▽	6.3S	121-400 ±0.4
▽▽▽▽	0.8S	401-1000 ±0.5

TITLE				PART NAME			
VECT-400S				Total Assembly			
A3	SCALE: 0.080	DESIGN	CHECK	APPROVE	DRAWING NO.		
UNIT : M/M		장필원				M040EJA0000000	
DATE : 2007.04.26							
This drawing is property of Hyrobotics. Use or copy of this drawing without proper permission from the appropriate technical-document managing department is prohibited.							
				 원양로봇틱스(주)			


1. Traverse unit



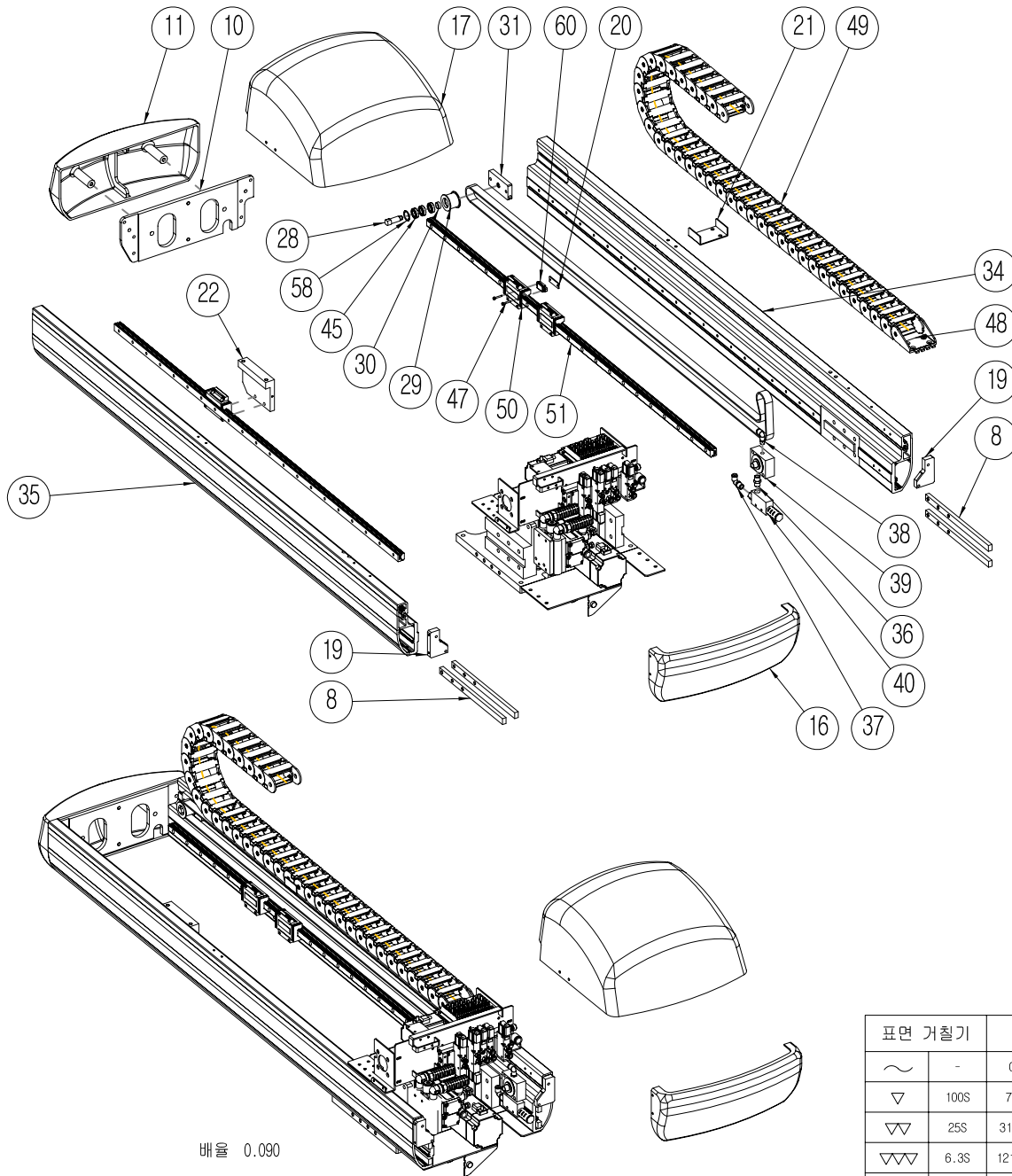
NO.	REVISIONS	DATE	APPROVE	REMARK
1				

27	MAGNET	PSSMRS52SHC888	1	.	Nippon-Automation	RS-52-SH-C형
26	LM-RAIL	PLMNSAH252140L	2	.	NSK	SAH25_2140L
25	LM-BLOCK	PLMNSAH25EM888	4	.	NSK	SAH25EM
24	LM-BLOCK	PLMNSAH25AL888	1	.	NSK	SAH25AL
23	ALARM_LAMP	PECEXLAMPYSP3	1	.	YONGSUNG	YSPL5-024A
22	C/V_LINK	PCVH6251B09023	1	.	.	HSP0625-1BN-90R-23L
21	C/V_END_B/K	PCVE6251300088	1	.	.	HSP0625-1BN-END
20	렌치볼트 (SUS)	PBTHM003008ME0	4	SUS	.	M3x8L
19	TIMING_BELT	PBLTA103002500	1	.	.	AT10-30-2500L
18	FILTER_REGULATOR_ASSY	PAXSTAW4000ASY	1	.	.	
17	COUNTER	MXAKAAB1000000	1	.	.	SIZE:100x270
16	TENSION_BLOCK	MO55MAA1004N10	1	SS41	.	
15	BRACKET	MO40HFA1007ZZ0	1	SS41	.	
14	TR_C/V_B/K	MO40FJA1004ZZ0	1	SS41	.	
13	BODY	MO40FJA1001PWO	1	SS41	.	
12	JOINT_KEY	MO35HAA1013ZZ0	1	S45C	.	
11	PLATE	MO20HFA1021PWO	1	SS41	.	
10	BRACKET	MO15MAB1018MCO	1	SUS304	.	
9	BRACKET	MO15MAB1017MCO	1	SUS304	.	
8	BLOCK	MO15MAB1016ZZ0	4	SS41	.	
7	LM_B/L_BASE	MO15MAB1012ZZ0	1	SS41	.	
6	COVER	MO15MAB1011PWO	2	AC4C	.	
5	GRIPPER_BLOCK	MO15MAB1009ZZ0	1	SS41	.	
4	GRIPPER_BLOCK	MO15MAB1004ZZ0	1	SS41	.	
3	GRIPPER	MO15MAB1002MCO	2	AG0G3-T5	.	
2	SENSOR_CABLE	E020PFA5080065	1	.	.	
1	SENSOR_CABLE	E020PFA5010030	1	.	.	

NO	DESCRIPTION	DRAWING NO	Q'TY	METERIAL	FINISH	REMARK
----	-------------	------------	------	----------	--------	--------

표면 거칠기	일반공차			TITLE				PART NAME				
~	-	0-6	±0.1	VECT-400D				Traverse_unit				
▽	100S	7-30	±0.2	A3	SCALE: 0.080	DESIGN	CHECK	APPROVE	DRAWING NO.			
▽▽	25S	31-120	±0.3	UNIT : M/M	장필원			MO40FJA1000000				
▽▽▽	6.3S	121-400	±0.4	DATE : 2007.04.26		This drawing is property of Hyrobotics. Use or copy of this drawing without proper permission from the appropriate technical-document managing department is prohibited.						
▽▽▽▽	0.8S	401-1000	±0.5									 한양로보틱스(주)

2-1. Kick unit



배율 0.090

NO.	REVISIONS	DATE	APPROVE	REMARK
1				

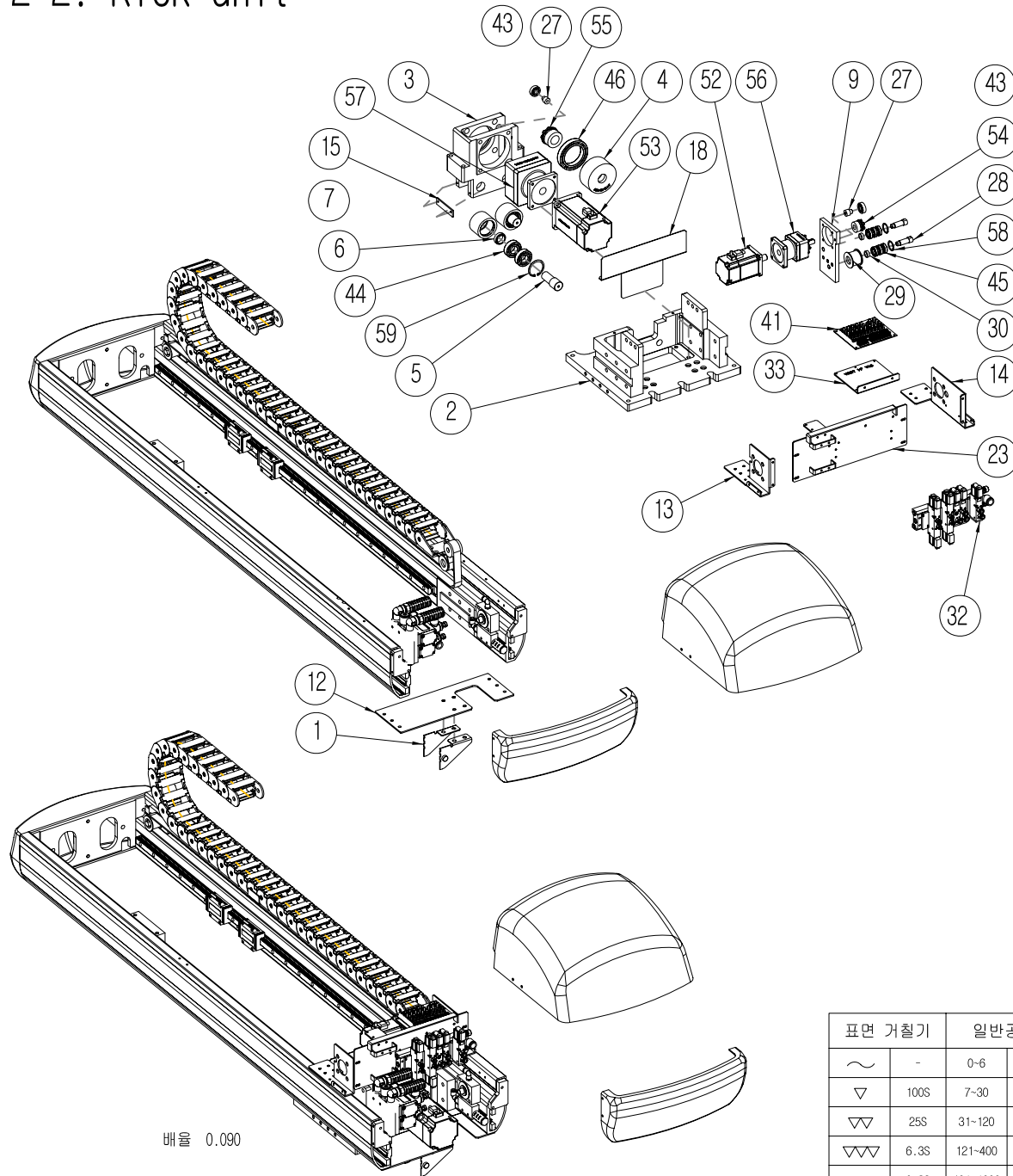
32	Sol-valve unit	M040EFA2100000	1	.				
31	TENTION_SHAFT	M036HAA2045ZZO	1	S45C				
30	COLLAR	M036HAA2044ZZO	3	SS41				
29	IDLE_ROLLER	M036HAA2043ZZO	3	A6061				
28	SHAFT	M036HAA2042ZZO	3	S45C				
27	GUIDE_SHAFT	M036HAA2026ZZO	2	SS41				
26	PULLEY	M030SBA2040ZZO	1	S55C				
25	Sol-valve unit	M020FFA2200000	1	.				
24	SOL_V/V_PLATE	M020FFA2030ZZO	1	SS41				
23	SOL_V/V_BOXBASE_C	M020FFA2029ZZO	1	SS41				
22	PLATE-A	M015MAB4008ZZO	1	A6061				
21	BRACKET	M015MAB2036MCO	1	SUS304				
20	NUT_KEY	M015MAB2035MCO	1	SUS304				
19	COVER_BLOCK	M015MAB2034MCO	2	A6061				
18	COVER	M015MAB2033ZZO	1	SS41				
17	SOLBOX_COVER	M015MAB2032MDO	1	ABS				
16	B-COVER-1	M015MAB2031MDO	1	ABS				
15	BLOCK	M015MAB2028MCO	2	아세탈(백색)				
14	SOL_V/V_BOXBASE_B	M015MAB2024ZZO	1	SS41				
13	SOL_V/V_BOXBASE_A	M015MAB2023ZZO	1	SS41				
12	C/V_PLATE	M015MAB2022ZZO	1	SS41				
11	COVER	M015MAB2021PW0	1	AC4C				
10	PULL_OUT_COVER	M015MAB2020ZZO	1	SS41				
9	MOTOR_PLATE	M015MAB2016ZZO	1	SS41				
8	NUT_KEY	M015MAB2014ZZO	4	S45C				
7	IDLE_ROLLER	M015MAB2010MCO	2	A6061				
6	COLLAR	M015MAB2008ZZO	2	SS41				
5	IDLE_SHAFT	M015MAB2007ZZO	2	S45C				
4	TIMING_PULLEY	M015MAB2006ZZO	1	S55C				
3	HORIZONTAL_M/B	M015MAB2004MCO	1	AC4C				
2	SLIDE_BASE	M015MAB2003MCO	1	AC4C				
1	C/V_END_B/K	HSP0625-18N-M	1	.				HSP-0625-18N-M

NO	DESCRIPTION	DRAWING NO	Q'TY	MATERIAL	FINISH	REMARK
----	-------------	------------	------	----------	--------	--------

표면 거칠기	일반공차	TITLE	PART NAME		
~	0-6 ±0.1	VECT-400S	Kick unit		
▽	100S 7-30 ±0.2	A3 SCALE: 0.090	DESIGN	CHECK	APPROVE
▽▽	25S 31-120 ±0.3	UNIT : M/M	DRAWING NO.		
▽▽▽	6.3S 121-400 ±0.4	DATE : 2007.04.30	장필원		
▽▽▽▽	0.8S 401-1000 ±0.5	This drawing is property of Hyrobotics. Use or copy of this drawing without proper permission from the appropriate technical-document managing department is prohibited.			



2-2. Kick unit



NO.	REVISIONS	DATE	APPROVE	REMARK
1				

NO.	DESCRIPTION	DRAWING NO	Q'TY	METERIAL	FINISH	REMARK
60	MAGNET	PSSMRS52SHC888	1	.	Nippon-Automation	RS-52-SH-C형
59	SNAP_RING	PRGH042H888888	2	.	.	.
58	SNAP_RING	PRGH024H888888	3	.	.	.
57	REDUCER	PRESSFS90P8088	1	SHIMPO	.	VRSF-S90-MSMD08
56	REDUCER	PRESSF56P80288	1	SHIMPO	.	VRSF-56-MSMD02
55	POWER_LOCK	PPLMA24428888	1	.	.	MA24-42
54	POWER_LOCK	PPLMA12268888	1	.	.	MA12-26
53	SERVO_MOTOR	PMTBMSMD082P1S	1	PANASONIC	.	MSMD082P1S
52	SERVO_MOTOR	PMTBMSMD022P1S	1	PANASONIC	.	MSMD022P1S
51	LM-RAIL	PLMBSAH201240L	2	.	NSK	SAH20_1240L
50	LM-BLOCK	PLMBSAH20EM888	3	.	NSK	SAH20EM
49	C/V_LINK	PCVH4502309536	1	.	.	HSP0450-2BN-95R-36L
48	C/V_END_B/K	PCVE4502300088	1	.	.	HSP0450-2BN-END
47	렌치볼트(SUS)	PBTHM003020ME0	2	SUS	.	M3x20L
46	BEARING	PBRA6911Z28888	1	.	.	6911ZZ
45	BEARING	PBRA6901Z28888	9	.	.	6901ZZ
44	BEARING	PBRA6004Z28888	4	.	.	6004ZZ
43	BEARING	PBRA6000Z28888	2	.	.	6000ZZ
42	TIMING_BELT	PBLTUM2088888_LUP5M2630	1	.	.	UP5M-20-HC-2630L
41	I/F_BOARD	PBDC1FVECT8888	1	.	.	VECT_IF_BOARD
40	VACUUM_PUMP	PAXVAV015H8888	1	.	.	AV-015HS
39	VACUUM_AIR_FILTER	PAXVAF05888888	1	.	.	AF-05
38	FITTING	PAXFEL06180888	1	.	WITTA_MOORE	AL6-1/8
37	FITTING	PAXFEL06140888	1	.	.	AL6-1/4
36	FITTING	PAXFDOUBLEPT14	1	.	.	양PT-1/4
35	FILE	M040FJA2002MCO	1	A6063-T5	.	.
34	FILE	M040FJA2001MCO	1	A6063-T5	.	.
33	PLATE	M040FFA2038Z20	1	SS41	.	.

NO	DESCRIPTION	DRAWING NO	Q'TY	METERIAL	FINISH	REMARK
----	-------------	------------	------	----------	--------	--------

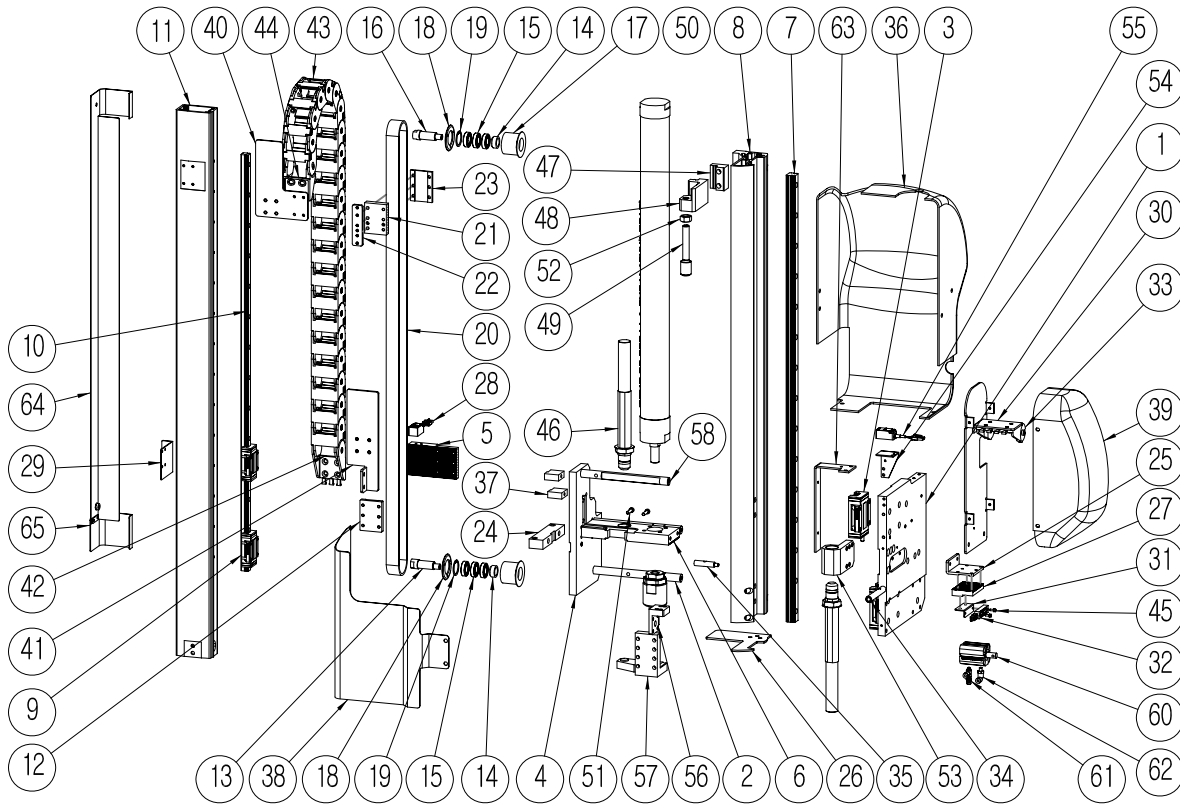
표면 거칠기	일반공차
~	0-6 ±0.1
▽	100S 7-30 ±0.2
▽▽	25S 31-120 ±0.3
▽▽▽	6.3S 121-400 ±0.4
▽▽▽▽	0.8S 401-1000 ±0.5

TITLE			VECT-400S			PART NAME			Kick unit		
A3	SCALE : 0.090	DESIGN	CHECK	APPROVE	DRAWING NO.						
UNIT : M/M		장필원				M040EJA2000000					
DATE : 2007.04.30		This drawing is property of Hyrobotics. Use or copy of this drawing without proper permission from the appropriate technical-document managing department is prohibited.									



배율 0.090


4. Main arm unit



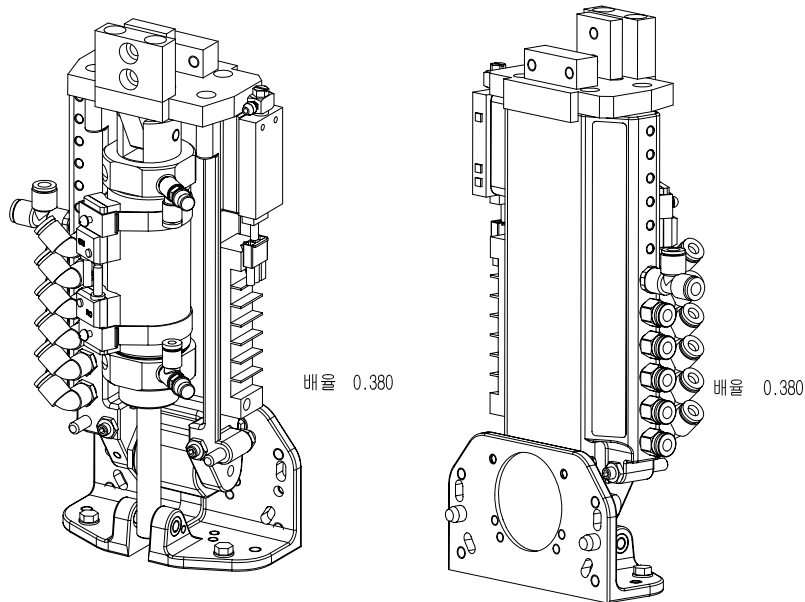
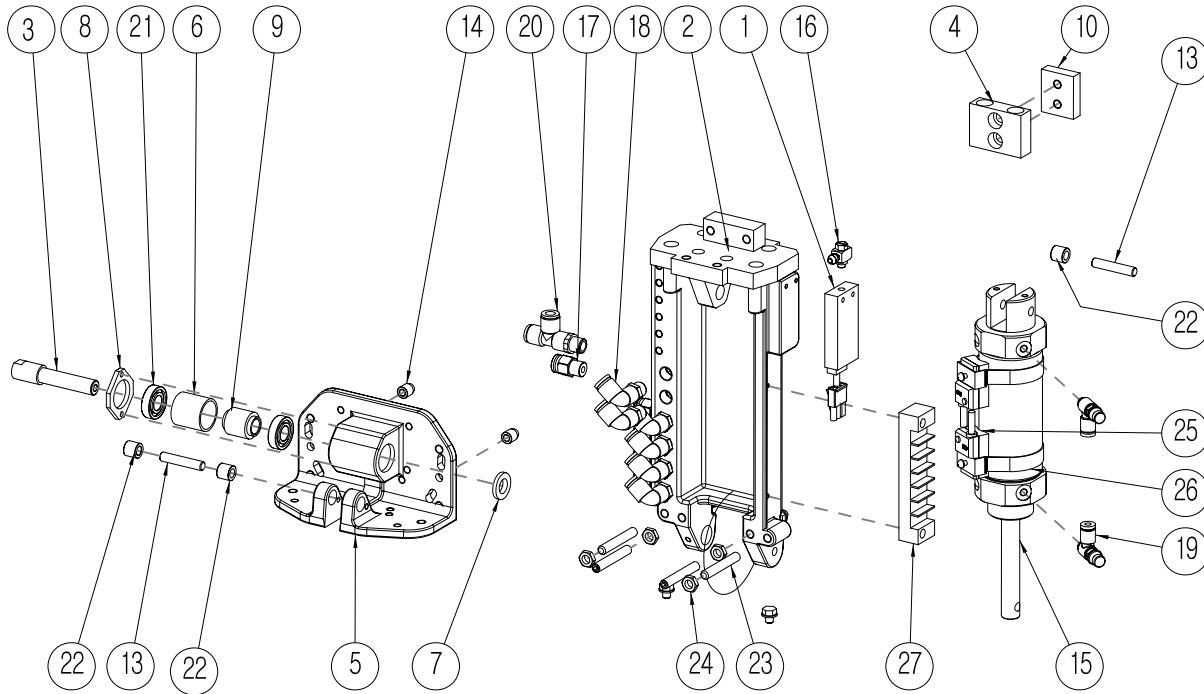
65	BELT_COVER	M015MAB4038Z20	1	SS41		
64	BELT_COVER	M040FJA4036Z20	1	SS41		
63	BRACKET	M015MAB4024Z20	1	SS41		
62	FITTING	PAXFEL04M58888	1		AL4-M5	
61	SPEED_CON	PAXFES04M58888	1		ASC4-M5-0	
60	CYL.	PAXA3357700108	1		FESTO	KADVB-20-10-PA(SA33577R)
59	CYL_B/K	M040FFA4015Z20	1	SS41		
58	SHAFT	M020FFA4009Z20	1	SM45C		
57	BLOCK	M020FFA4051Z20	1	S45C		
56	FLOATING_JOINT	PAXFKM16X15888	1		FESTO	FK-M16x1.5
55	SENSOR_CABLE	E020FFA5040080	1			
54	SENSOR_B/K	M020FFA4024Z20	1	SS41		
53	BLOCK	M020FFA4014M00	1	S45C		
52	HEX_NUT	PNTHM012002Z20	1			
51	SOCKETHEAD_BOLT	P8THM05020Z80	2			

표면 거칠기	일반공차
~	0-6 ±0.1
▽	100S 7-30 ±0.2
▽▽	25S 31-120 ±0.3
▽▽▽	6.3S 121-400 ±0.4
▽▽▽▽	0.8S 401-1000 ±0.5

50	CYLINDER	PAXA3474505588	1	FESTO		DSAG-50-550PPV-SA34745KR
49	STOPPER	M040FFA4052Z20	1	SS41		
48	STOPPER-A	M020FFA4049Z20	1	S45C		
47	STOPPER-B	M020FFA4050Z20	1	S45C		
46	ABSORBER	PSAK1EM148060E	2			TEM14-80-6CE
45	렌치볼트 (SUS)	P8THM003008MEO	2	SUS		M3x8L
44	C/V_END_B/K	HSP0450-1BN-M	1			HSP0450-1BN-M
43	C/V_LINK	PCVH4501B07521	1			HSP0450-1BN-75R-21L
42	C/V_END_B/K	PCVE4501300088	1			HSP0450-1BN-END
41	BRACKET	M015MAB4044Z20	1	SS41		
40	BRACKET	M015MAB4023Z20	1	SS41		
39	COVER	M015MAB4035M00	1	ABS		
38	COVER	M020FFA4042Z20	1	SS41		t1
37	BLOCK	M015MAB4043M00	2	A6061		
36	COVER	M020FFA4041M00	1	ABS		
35	SHAFT	M015MAB3025Z20	1	S45C		
34	BAR	M015MAB4025Z20	1	SS41		
33	C/V_END_B/K	HSP0450-2BN-M	1			HSP0450-2BN-M
32	SENSOR_CABLE	E020PFA5020030	1			
31	BRACKET	M015MAB4040Z20	1	SUS304		
30	C/B_FIXED_B/K	M015MAB4034Z20	1	SS41		
29	BRACKET	M015MAB4039Z20	1	SS41		
28	SENSOR_CABLE	E020PFA5060080	1			도면참조
27	BELT_GRIPPER	M035HAA3031M00	1	A6063-T5		소재시급
26	PLATE	M035HAA3037Z20	1	SS41		
25	BRACKET	M015MAB3032Z20	1	SS41		
24	PLATE-A	M015MAB4005Z20	1	A6061		
23	GRIPPER_BLOCK	M035HAA3017Z20	1	SS41		
22	GRIPPER_NUT	M035HAA3010Z20	1	SS41		
21	BELT_GRIPPER	M035HAA3014M00	1	A6063-T5		160g
20	TIMING_BELT	PBLTH5M2501830	1			HTD5M-25-1830L
19	SWAP_RING	PRGH028H888888	2			
18	TIMING_PULLEY	M035HAA3015Z20	2	A6061		
17	ROLLER	M035HAA3021Z20	2	A6061		
16	SHAFT	M015MAB4020Z20	1	S45C		
15	BEARING	PBRAG022Z8888	6			6902ZZ
14	COLLAR	M035HAA3018Z20	2	SS41		
13	SHAFT	M035HAA3019Z20	1	S45C		
12	GRIPPER_BLOCK	M035HAA3042Z20	1	SS41		
11	제품상하_2차파일	M040FJA4007M00	1	A6063-T5		
10	LM-RAIL	PLMRSAH150820L	1		NSK	SAH15_820L
9	LM-BLOCK	PLMRSAH15EM888	2		NSK	SAH15EM
8	제품상하_1차파일	M040FJA4006M00	1	A6063-T5		
7	LM-RAIL	PLMRSAH200880L	1		NSK	SAH20_880L
6	BELT_GRIPPER	M020FFA4009M00	1	A6063-T5		550g
5	BELT_GRIPPER	M020FFA4004M00	1	A6063-T5		290g
4	PLATE	M020FFA4003M00	1	A6061		
3	LM-BLOCK	PLMRSAH20EM888	2			SAH20EM
2	SHAFT	M015MAB4009Z20	2	SM45C		
1	PLATE	M020FFA4001M00	1	A6061		

NO	DESCRIPTION	DRAWING NO	Q'TY	METERIAL	FINISH	REMARK
TITLE VECT-400D PART NAME Main arm unit						
A3		SCALE: 0.100	DESIGN	CHECK	APPROVE	DRAWING NO.
UNIT : M/M		장필원		M040FJA4000000		
DATE : 2007.04.26		This drawing is property of Hyrobotics. Use or copy of this drawing without proper permission from the appropriate technical-document managing department is prohibited.				
						

5. Rotation unit



NO.	REVISIONS	DATE	APPROVE	REMARK
1				

28	WASHER	PWSPM005000ZCA	4	.	.	.
27	TERMINAL	PTLA07P8888888	1	.	.	7핀자대
26	SENSOR_BAND	PSSOROSNBAND88	2	.	.	RO_BAND(40용)
25	SENSOR	PSSOROSNB888888	2	.	.	RO(AP)
24	HEX_NUT	PNTHM006002ZCO	4	.	.	.
23	STOPPER_BOLT	PBTM006040MCO	4	SUS	.	M6-40L
22	ROLLER_BEARING	PBRNFJ69ZZ8888	3	.	.	FJ-69
21	BEARING	PBRA6900ZZ8888	2	.	.	6900ZZ
20	FITTING	PAXFEST0618088	1	.	.	AST6-1/8
19	SPEED_CON	PAXFESC04M5888	2	NITTA_MOORE	.	ASC4-M5-0
18	FITTING	PAXFEL06180888	6	.	NITTA_MOORE	AL6-1/8
17	FITTING	PAXFEC06180888	5	.	NITTA_MOORE	AC6-R1/8
16	NIPPLE	PAXFBUJLM56888	1	.	.	BUJL-M5-6
15	CYLINDER	PAXA3548400588	1	FESTO	DSAS-40-52-PPV-A-SA35484KR	
14	PIN	M035HAA5012ZZO	2	SS41	.	.
13	PIN	M035HAA5009MCO	2	SUJ2	.	.
12	BOLT	M020HFA5025ZZO	4	SM45C	.	.
11	BLOCK	M020HFA5016ZZO	1	A6061	.	.
10	BLOCK	M015HAB5011ZZO	1	SS41	.	.
9	COLLAR	M015HAB5009ZZO	1	SS41	.	.
8	PLATE	M015HAB5008ZZO	1	SS41	.	.
7	COLLAR	M015HAB5007ZZO	1	SS41	.	.
6	COLLAR	M015HAB5006ZZO	1	SS41	.	.
5	PLATE	M015HAB5005ZZO	1	S45C	.	.
4	BLOCK	M015HAB5004ZZO	1	A6061	.	.
3	PIN	M015HAB5003ZZO	1	S45C	.	.
2	BLOCK	M015HAB5002PWO	1	AC4C	.	.
1	SENSOR_CABLE	E020PFA5160020	1	.	.	.
NO	DESCRIPTION	DRAWING NO	Q'TY	METERIAL	FINISH	REMARK

표면 거칠기	일반공차
~	0-6 ±0.1
▽	100S 7-30 ±0.2
▽▽	25S 31-120 ±0.3
▽▽▽	6.3S 121-400 ±0.4
▽▽▽▽	0.8S 401-1000 ±0.5

TITLE: VECT-400D PART NAME: Rotation unit

A3 SCALE: 0.290 DESIGN CHECK APPROVE DRAWING NO.

UNIT: M/M DATE: 07.04.27 장필원

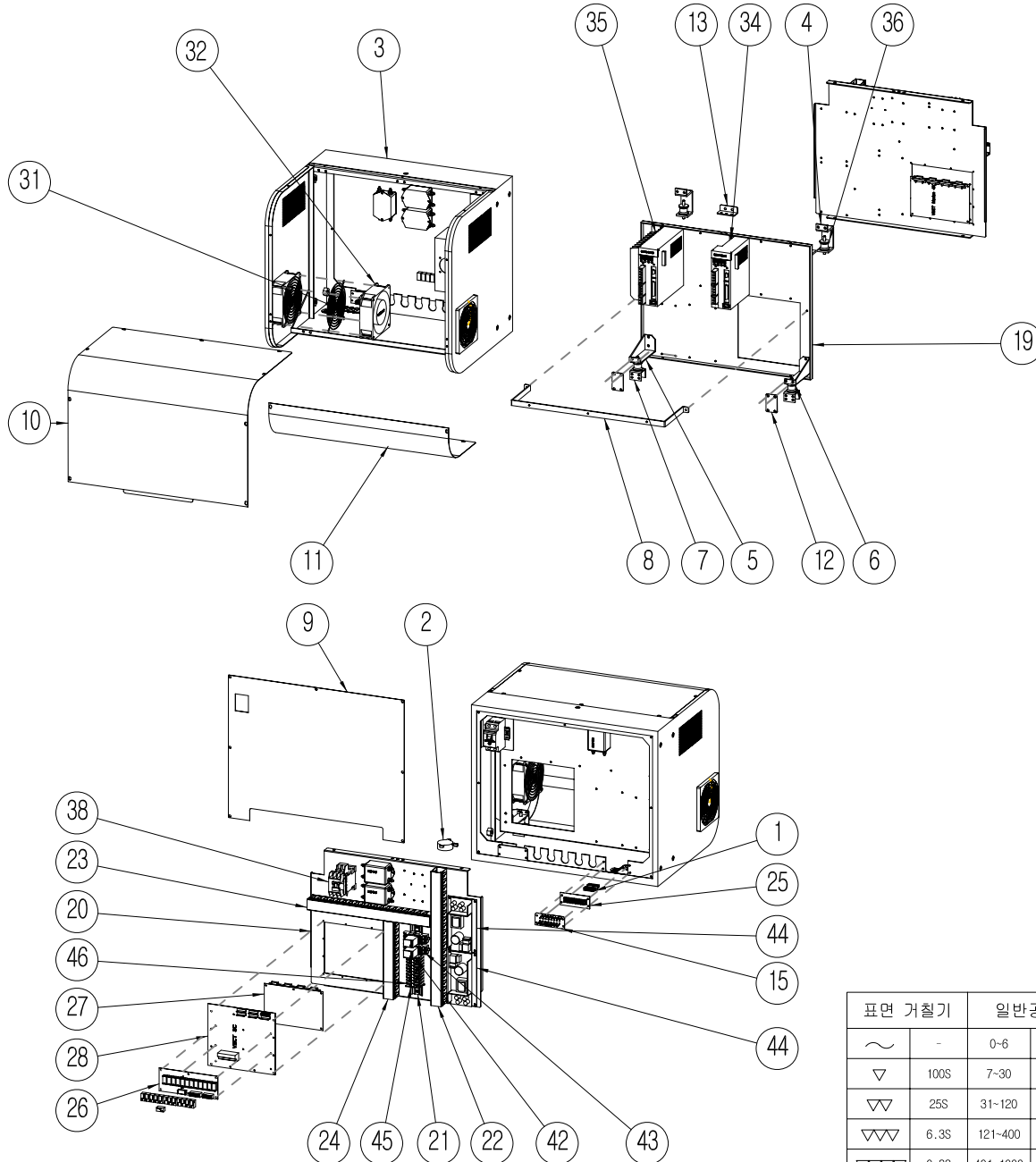
M040FJA5000000

This drawing is property of Hyrobotics. Use or copy of this drawing without proper permission from the appropriate technical-document managing department is prohibited.



9. Controller unit

VECT-V-200D (2X), PANASONIC



NO.	REVISIONS	DATE	APPROVE	REMARK
1				

46	세파레타	PTLD0600015888	1	.	.	TB-15A(600V)
45	터미널 단자대	PTLD0600015288	10	.	.	S.H-15A(600V)
44	SMPS	PSMASMPS000188	2	.	.	HNPS-75S-24-N
43	RELAY_SOCKET	PRLKLY28888888	2	.	KACON	KLY2
42	RELAY	PRLALY210C248	2	.	HONEYWELL	SZR-LY2-N1-DC24
41	RELAY	PRL2214PUS2488	2	.	.	G6B-2214P-US-24VDC
40	RELAY	PRL2014PUS2488	1	.	.	G6B-2014P-US-24VDC
39	RELAY	PRL1174PFDUS24	10	.	.	G6B-1174P-FD-US-24VDC
38	교류전자점촉기	PNSCGMC2288888	1	LS산전	.	GMC-22
37	차단기	PNSC32KGRA1588	1	.	LS산전	32KGrA(15A)
36	ANTI VIBRATION-GELS	PWXK25M88888888	4	SILICON	경도특수고무	25-M8-경도40
35	SERVO_DRIVE	PMTXMCDDT35208	1	PANASONIC	.	MDDT3520
34	SERVO_DRIVE	PMTXMADDT12078	1	PANASONIC	.	MADDT1207
33	NOISE_FILTER	PFTEDI TES1T010	3	동일기업	.	ES1-T10
32	FAN	PEXFSJ1238HA28	2	.	SUNTRONIX	SJ1238HA2-105X105
31	FAN_COVER	PEXFS105105888	2	.	SUNTRONIX	SJ1238HA2-105X105
30	FAN_FILTER	PEXFFILTER102F	2	.	SUNTRONIX	SJ1238HA2-105X105
29	접지부스바	PEXELEBAR14588	1	.	.	8핀 (동3+145*20)
28	S/C_BOARD	PBDDSC88888888	1	.	.	VECT_SC_BOARD
27	MOTION_BOARD	PBDDMOTION8888	1	.	.	VECT_M_BOARD
26	I/L_BOARD	PBDDI188888888	1	.	.	VECT_IL_BOARD
25	LED_BOARD월백	PBDDLEDVECT888	1	.	.	VECT_LED_BOARD
24	배선DUCT-30	MO20KFA9026MCO	1	.	.	.
23	배선DUCT-30	MO20KFA9025MCO	1	.	.	.
22	배선DUCT-30	MO20KFA9024MCO	1	.	.	.
21	TERMINAL_CHANNEL	MO20KFA9020MCO	1	AL2024	.	.
20	CON'T_BRACKET	MO20HFA9010ZZO	1	SS41	.	.
19	PLATE	MO20KFA9003ZZO	1	SS41	.	.
18	COVER	MO20HFA9003ZZO	1	SS41	.	.
17	인터록단자BOX	MO20HFA9031ZZO	1	SS41	.	.
16	LED_COVER	MO20HFA9028MCO	1	아크릴	.	.
15	PLATE	MO20HFA9023MCO	1	AL6061	.	.
14	TERMINAL_CHANNEL	MO20HFA9022MCO	1	AL2024	.	.
13	BRACKET	MO20HFA9018PWO	1	SS41	.	.
12	BRACKET	MO20HFA9017PWO	2	SS41	.	.
11	CON'T_BRACKET	MO20HFA9014ZZO	1	SS41	.	.
10	CON'T_BRACKET	MO20HFA9013ZZO	1	SS41	.	.
9	CON'T_BRACKET	MO20HFA9012ZZO	1	SS41	.	.
8	CON'T_BRACKET	MO20HFA9009ZZO	1	SS41	.	.
7	CON'T_BRACKET	MO20HFA9007ZZO	2	SS41	.	.
6	CON'T_BRACKET	MO20HFA9006ZZO	1	SS41	.	.
5	CON'T_BRACKET	MO20HFA9005ZZO	1	SS41	.	.
4	CON'T_BRACKET	MO20HFA9004ZZO	2	SS41	.	.
3	COVER	MO20HFA9002ZZO	1	SS41	.	.
2	BUZZER_CABLE	ESS5TW4610060E	1	.	.	.
1	컨트롤박스케이블	E020PFA8040060	1	.	.	도면참조

표면 거칠기	일반공차
~	0-6 ±0.1
▽	100S 7-30 ±0.2
▽▽	25S 31-120 ±0.3
▽▽▽	6.3S 121-400 ±0.4
▽▽▽▽	0.8S 401-1000 ±0.5

NO	DESCRIPTION	DRAWING NO	Q'TY	METERIAL	FINISH	REMARK
TITLE		VECT-V-200S(2X)		PART NAME Controller_unit		
A3		SCALE: 0.080	DESIGN	CHECK	APPROVE	DRAWING NO.
UNIT : M/M		장필원				MO20EFA9200000
DATE : 2007.04.26						
This drawing is property of Hyrobotics. Use or copy of this drawing without proper permission from the appropriate technical-document managing department is prohibited.						

