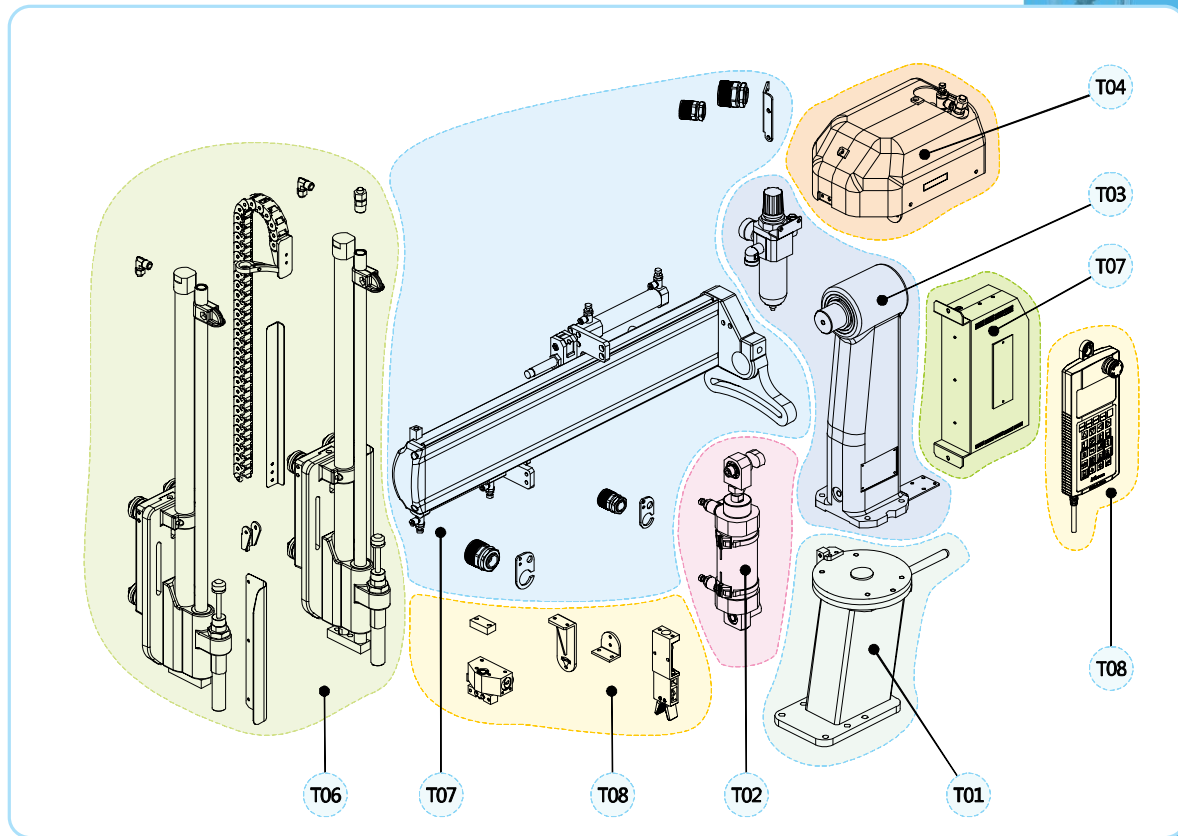




TOP IV Series

TOP IV-450~950
TOP IV-TWIN450~650

01 Assembly unit





탑포 스윙타입 취출로봇

TOP IV Series

T01

TOP IV
Assembly unit

HIT

MACH

MACH-II

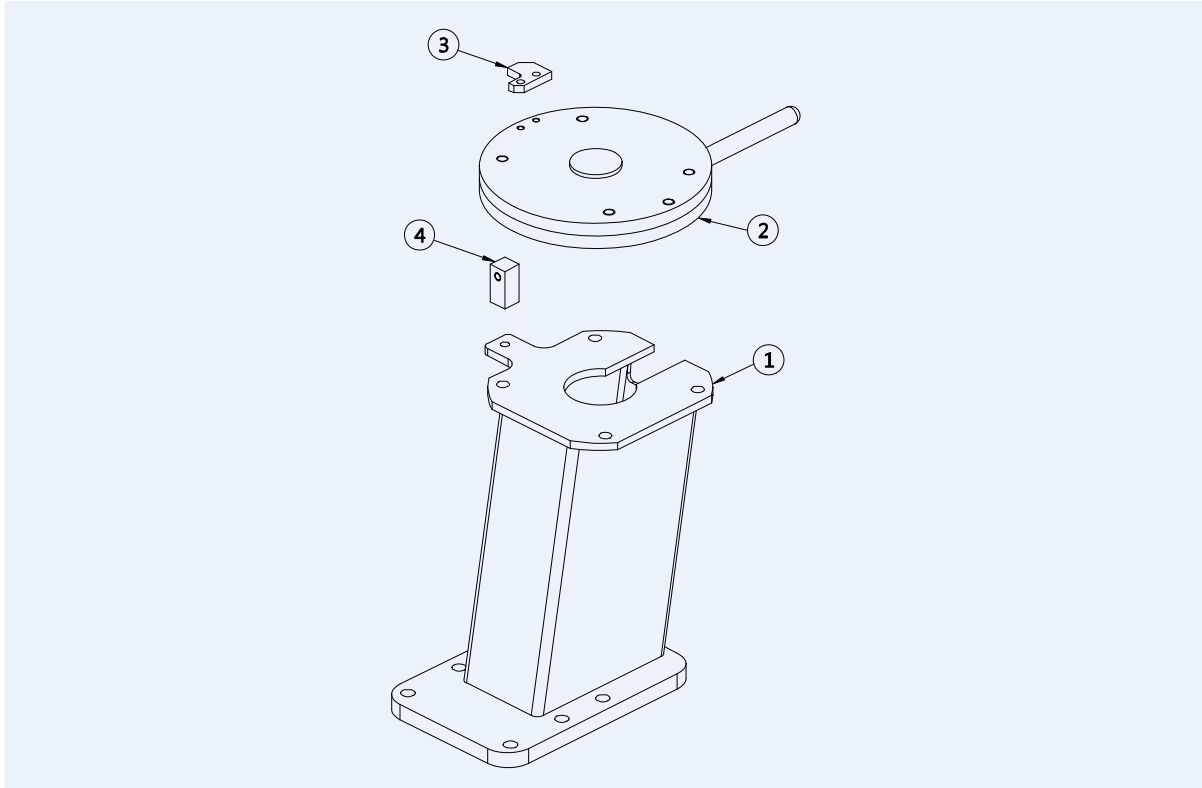
NEXIA

HYBRID

VECT



Base unit



부품리스트

순번 (No)	주문코드 (ORDER CODE)	부품명 (PART NAME)	관리자코드 (HY-CODE)	비고 (NOTE)
1	T0101	BASE(베이스)	MS55TW41001PW0	
2	T0102	R/P_ASSY(원반)	MS55TW41100000	
3	T0103	STOPPER(스토퍼)	MS55AT31002ZB0	
4	T0104	STOPPER(스토퍼)	MS55TW41002ZB0	

Take Out Robot Parts



ORDER CODE	T0101
PART NAME	BASE(베이스)



ORDER CODE	T0102
PART NAME	R/P_ASSY(원반)



ORDER CODE	T0103
PART NAME	STOPPER(스토퍼)



ORDER CODE	T0104
PART NAME	STOPPER(스토퍼)

TOP IV
Assembly unit

HiT

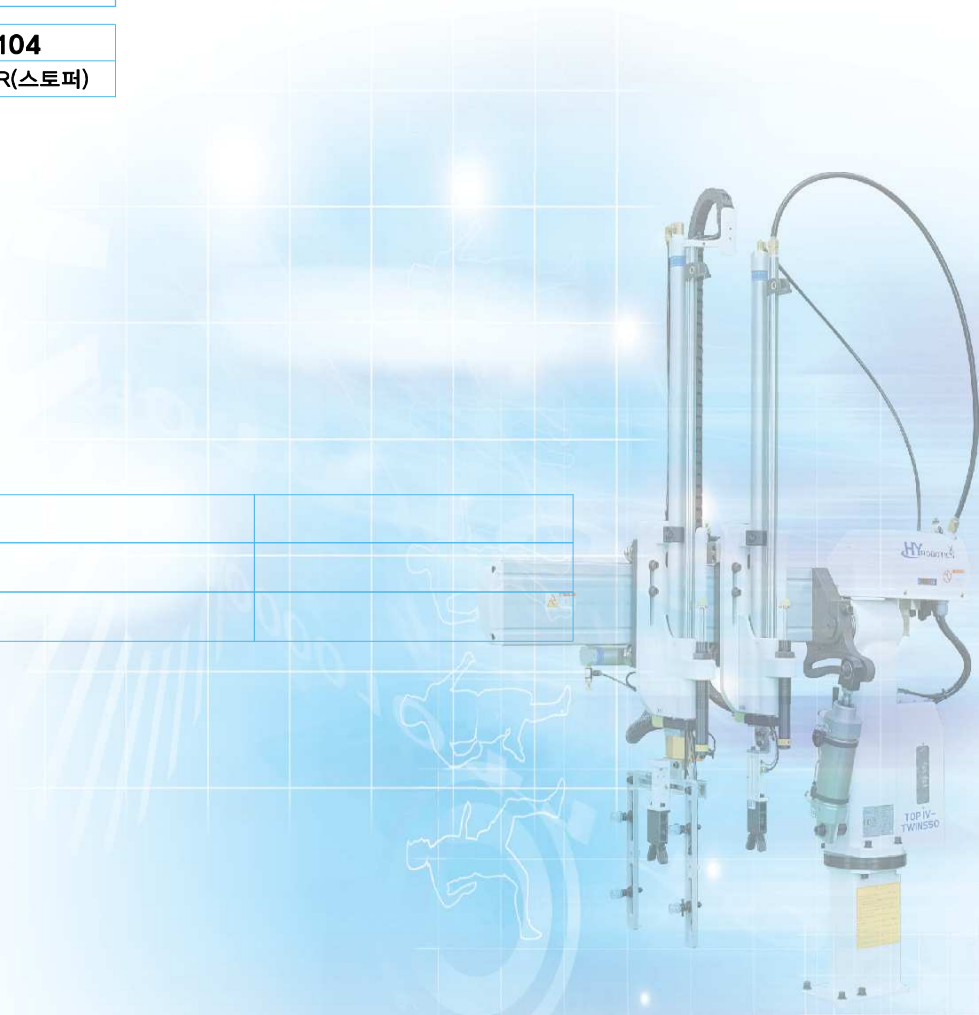
MACH

MACH-II

NEXIA

HYBRID

VECT





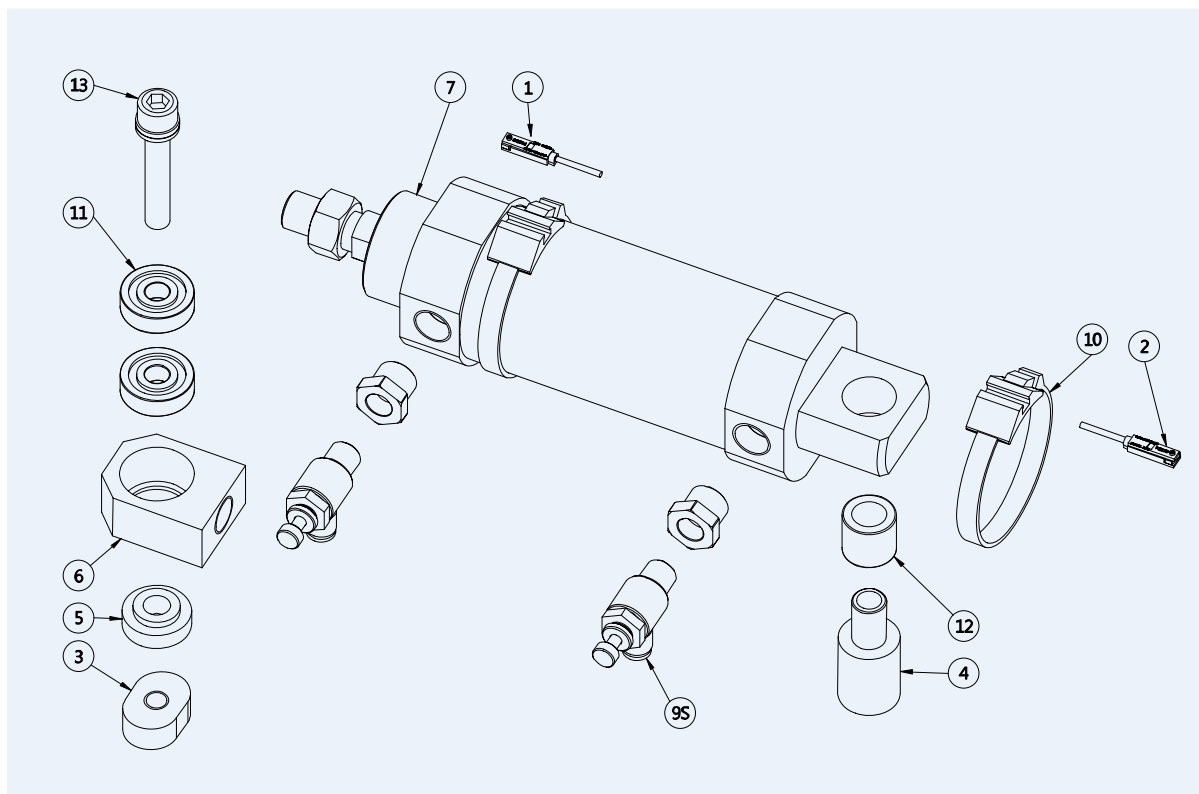
탑포 스윙타입 취출로봇

TOP IV Series

T02



Swivel unit



부품리스트

순번 (No)	주문코드 (ORDER CODE)	부품명 (PART NAME)	관리자코드 (HY-CODE)	비고 (NOTE)
1	T0201/T0202	SENSOR(회전센서)	PSSSME8KLED248	
2	T0203	BLOCK(블록)	MS55TW40101ZB0	
3	T0204	BLOCK(블록)	MS55TW40102ZB0	
4	T0205	WASHER(와셔)	MS55TW40103ZB0	
5	T0206	BLOCK(블록)	MS55TW40104ZB0	
6	T0207	CYLINDER(실린더)	PAXA3478800758	
7	T0209S	SPEED_CONTROL(스피드컨트롤)	PAXFESC0614888	
8	T0210	SENSOR_BAND(센서밴드)	PAXKSMBR863888	
9	T0211	BEARING(베어링)	PBRA6200ZZ8888	
10	T0212	BEARING(베어링)	PBRNHMK1420888	
11	T0213	SOCKETHEAD BOLT(렌치볼트)	x	

Take Out Robot Parts



ORDER CODE **T0201 / T0202**
PART NAME SENSOR(회전센서)



ORDER CODE **T0203**
PART NAME BLOCK(블록)



ORDER CODE **T0204**
PART NAME BLOCK(블록)



ORDER CODE **T0205**
PART NAME WASHER(와셔)



ORDER CODE **T0206**
PART NAME BLOCK(블록)



ORDER CODE **T0207**
PART NAME CYLINDER(실린더)



ORDER CODE **T0209S**
PART NAME SPEED_CONTROL(스피드컨트롤)



ORDER CODE **T0210**
PART NAME SENSOR_BAND(센서밴드)



ORDER CODE **T0211**
PART NAME BEARING(베어링)



ORDER CODE **T0212**
PART NAME BEARING(베어링)



ORDER CODE **T0213**
PART NAME SOCKETHEAD BOLT(렌치볼트)

TOPIV
Assembly unit

HIT

MACH

MACH-II

NEXIA

HYBRID

VECT



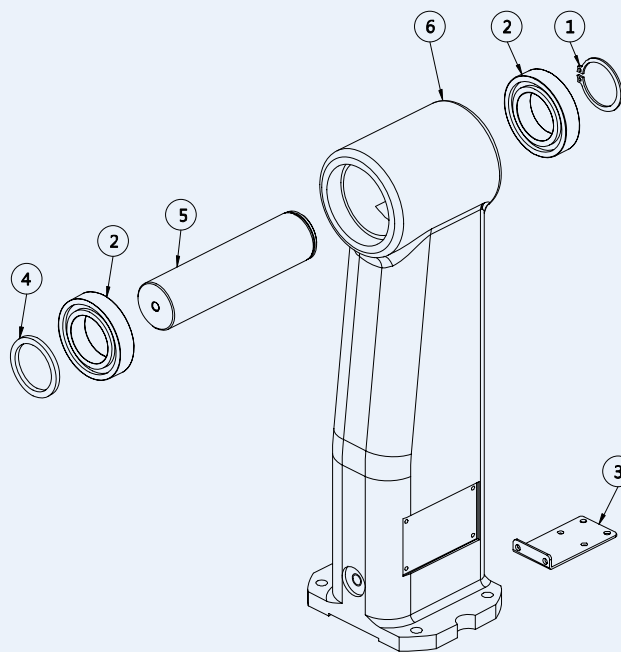
탑포 스윙타입 취출로봇

TOP IV Series

T03



Body unit



부품리스트

순번 (No)	주문코드 (ORDER CODE)	부품명 (PART NAME)	관리자코드 (HY-CODE)	비고 (NOTE)
1	T0301	SNAP RING(스냅링)	x	
2	T0302	BEARING(베어링)	PBRA6008ZZ8888	
3	T0303	CABLE B/K(케이블브라켓)	MS55TW42004N10	
4	T0304	COLLAR(컬러)	MS55TW42003ZW0	
5	T0305	SHAFT(샤프트)	MS55TW42002ZB0	
6	T0306	BODY(바디)	MS55TW42001PW0	
7	T0307	AIR_UNIT_ASSY(에어유닛)	PAXSTAW3000AS3	



Take Out Robot Parts



ORDER CODE	T0301
PART NAME	SNAP RING (스냅링)



ORDER CODE	T0302
PART NAME	BEARING (베어링)



ORDER CODE	T0303
PART NAME	CABLE B/K (케이블브라켓)



ORDER CODE	T0304
PART NAME	COLLAR (컬러)



ORDER CODE	T0305
PART NAME	SHAFT (샤프트)



ORDER CODE	T0306
PART NAME	BODY (바디)



ORDER CODE	T0307
PART NAME	AIR_UNIT_ASSY (에어유닛)

TOPiV
Assembly unit

HiT

MACH

MACH-II

NEXiA

HYBRiD

VECT



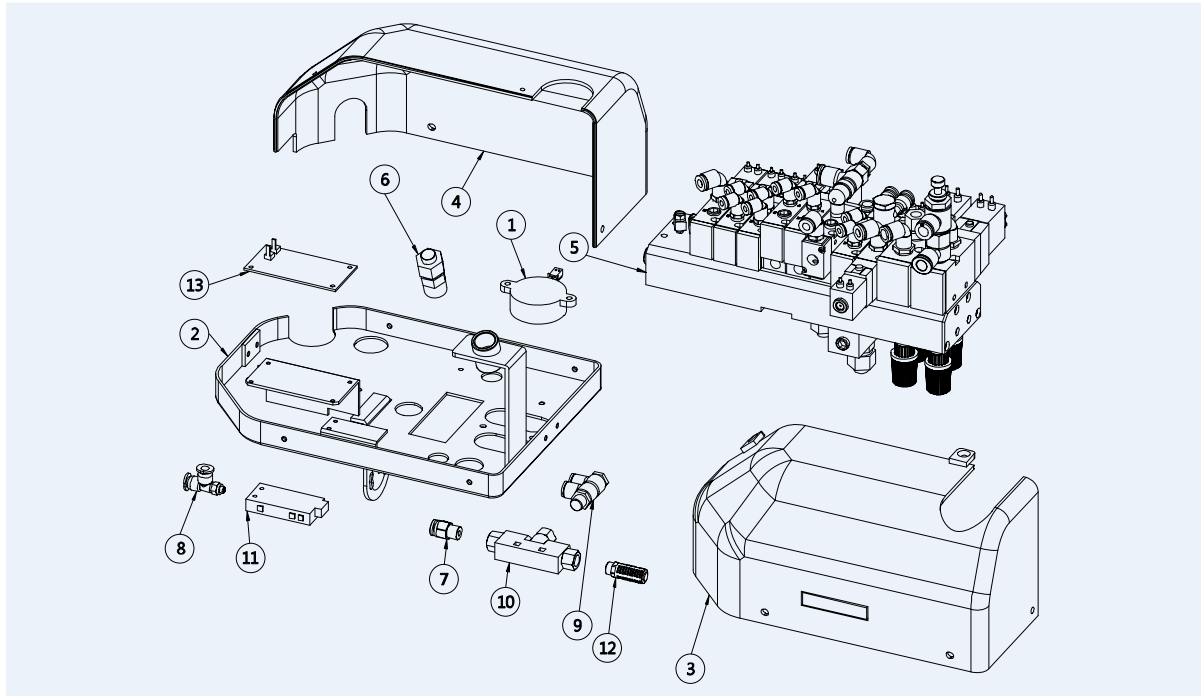
탑포 스윙타입 취출로봇

TOP IV Series

T04



Balve Box unit



부품리스트

순번 (No)	주문코드 (ORDER CODE)	부품명 (PART NAME)	관리자코드 (HY-CODE)	비고 (NOTE)
1	T0401	BUZZER(부저)	PEXZBUZZER8888	
2	T0402	SOL_BOX(솔박스)	MS55TW42101ZZ0	
3	T0403	COVER_A(슬커버 A)	MS55TW42102MD0	
4	T0404	COVER_B(슬커버 B)	MS55TW42103MD0	
5	T0405	SOL_VALVE_UNIT(솔밸브)	MS55TW42200000	
6	T0406	FITTING(취팅)	PAXFEC12380888	
7	T0407	FITTING(취팅)	PAXFEC06180888	
8	T0408	NIPPLE(닛블)	PAXFBUVLM56888	
9	T0409	FITTING(취팅)	PAXFPHT0618888	
10	T0410	VACUUM GEN (진공발생기)	PAXV193500R043	
11	T0411	VACUUM SENSOR(진공센서)	PAXVPS6102V NAM	
12	T0412	SILENCER(소음기)	PAXZSILENCER18	
13	T0413	IO_BOARD(IO보드)	PBDSSTW0001888	

Take Out Robot Parts

TOPIV
Assembly unit



ORDER CODE	T0401
PART NAME	BUZZER (부저)



ORDER CODE	T0402
PART NAME	SOL_BOX (솔박스)



ORDER CODE	T0403
PART NAME	COVER_A (솔커버 A)

HIT



ORDER CODE	T0404
PART NAME	COVER_B (솔커버 B)



ORDER CODE	T0405
PART NAME	SOL_VALVE_UNIT (솔밸브)



ORDER CODE	T0406
PART NAME	FITTING (휘팅)

MACH

MACH-II



ORDER CODE	T0407
PART NAME	FITTING(휘팅)



ORDER CODE	T0408
PART NAME	NIPPLE(넛볼)



ORDER CODE	T0409
PART NAME	FITTING (휘팅)

NEXIA

HYBRID



ORDER CODE	T0410
PART NAME	VACUUM GEN (진공발생기)



ORDER CODE	T0411
PART NAME	VACUUM SENSOR (진공센서)

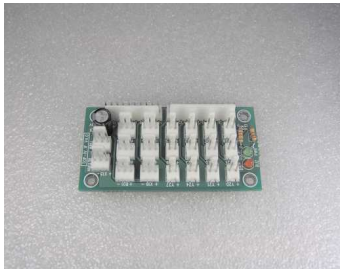


ORDER CODE	T0412
PART NAME	SILENCE (소음기)

VECT

Take Out Robot Parts

TOP IV
Assembly unit



ORDER CODE	T0413
PART NAME	IO_BOARD (io보드)

HiT

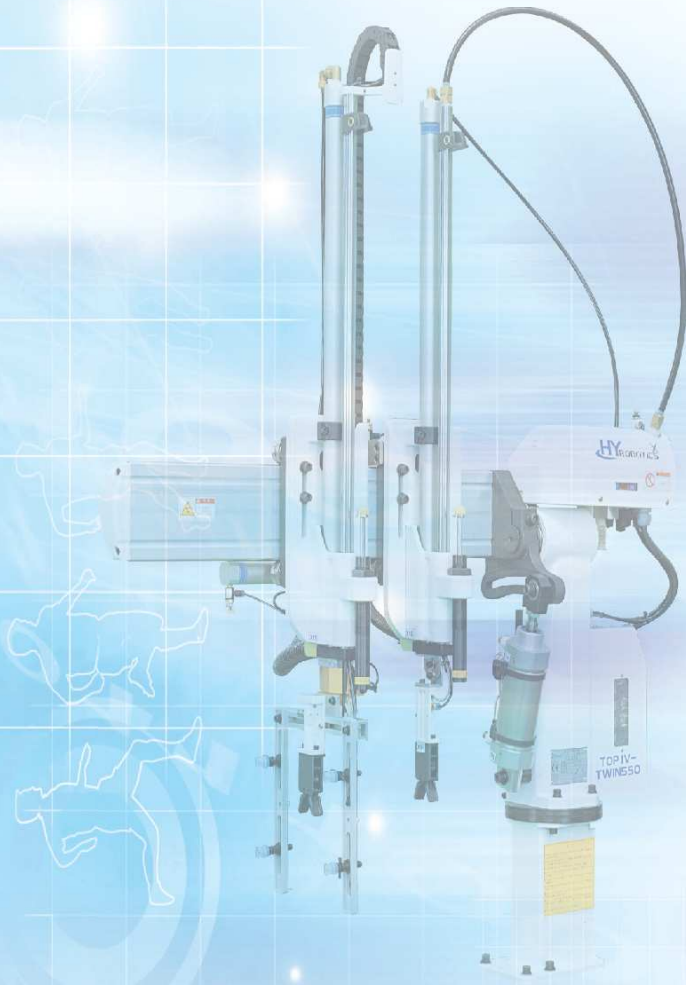
MACH

MACH-II

NEXiA

HYBRiD

VECT





탑포 스윙타입 취출로봇

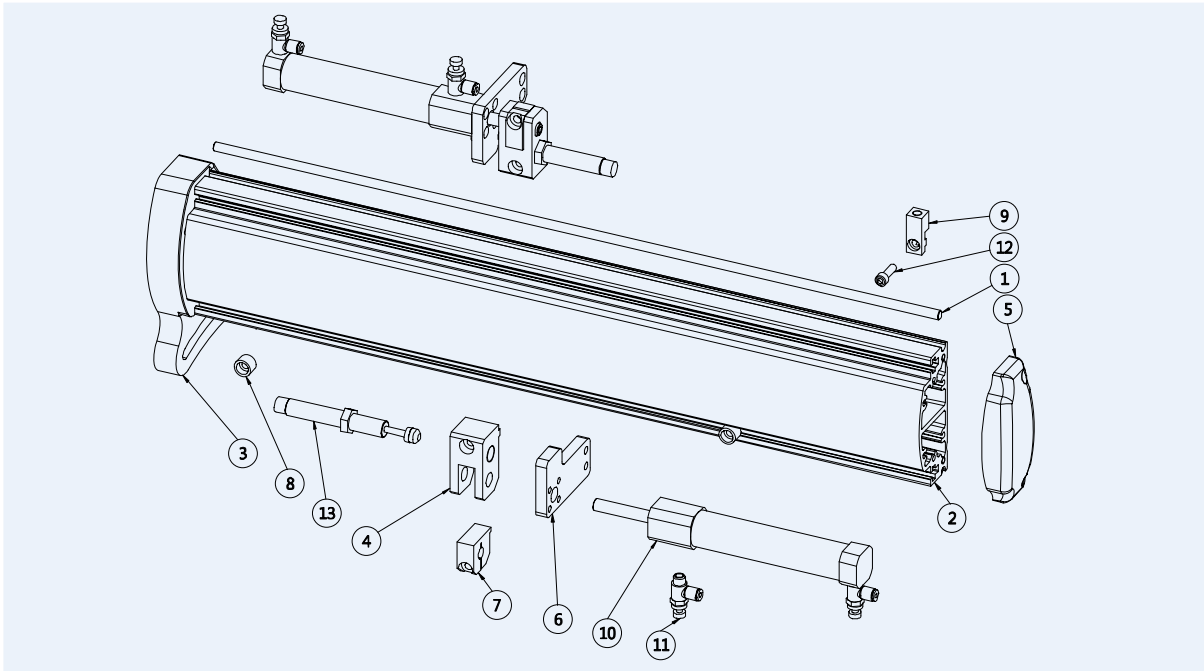
TOP IV Series

T05

TOP IV
Assembly unit



Full out unit



HiT

MACH

MACH-II

NEXIA

HYBRID

VECT



부품리스트

순번 (No)	주문코드 (ORDER CODE)	부품명 (PART NAME)	관리자코드 (HY-CODE)	비고 (NOTE)
1	T0501-1 T0501-2	GUIDE_SHAFT(열처리연마봉)	MS55TW33005MC0 MS75TW43005MC0	
2	T0502-1 T0502-2	PULL_OUT_FRAME(전후진파일)	MS55TW43001MC0 MS75TW43001MC0	
3	T0503	SWVEL_PLATE(선회플레이트)	MS55TW43002ZB0	
4	T0504	BLOCK(블록)	MS55TW43003NI0	
5	T0505	FILE_COVER(파일 커버)	MS55TW43004MD0	
6	T0506	CYL_PLATE(실린더 플레이트)	MS55TW43005NI0	
7	T0507	COLLAR(컬러)	MS55TW43006NI0	
8	T0508	STOPER(스토퍼)	MS55TW43007NI0	
9	T0509	BLOCK(블록)	MS55TW43008NI0	
10	T0510	CYLINDER(실린더)	PAXA3478700908	
11	T0511	SPEED_CONTROL(스피드컨트롤)	PAXFESC0418888	
12	T0512	SOCKETHEAD BOLT(렌치볼트)	x	

TOP-IV
Assembly unit

HIT

MACH

MACH-II

NEXIA

HYBRID

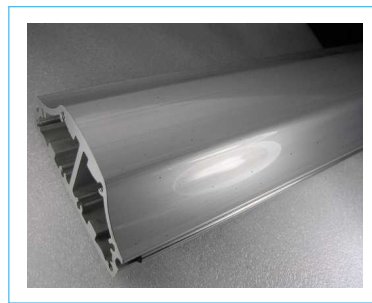
VECT

순번 (No)	주문코드 (ORDER CODE)	부품명 (PART NAME)	관리자코드 (HY-CODE)	비고 (NOTE)
13	T0513	SHOCK_ABSORBER(쇼바)	PSAKIEN07206CH	
14	T0514	B/K(브라켓)	MS55TW40004NI0	
15	T0515	B/K(브라켓)	MS55TW40002NI0	
16	T0516	B/K(브라켓)	MS55TW40003NI0	
17	T0517	FLEXIBLE_COUPLING(후렉시블 커플링)	PMXPFTNCG16B88	
18	T0518	FLEXIBLE_COUPLING(후렉시블 커플링)	PMXPFTNCG22B88	

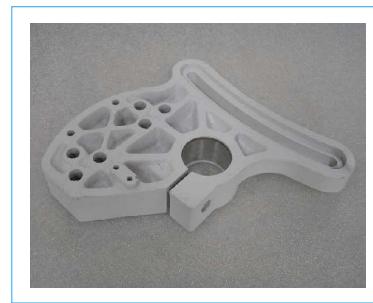
Take Out Robot Parts



ORDER CODE **T0501-1, 2**
PART NAME GUIDE_SHAFT (열처리연마봉)



ORDER CODE **T0502-1, 2**
PART NAME PULL_OUT_FRAME (전후진파일)



ORDER CODE **T0503**
PART NAME SWIVEL_PLATE (선화플레이트)



ORDER CODE **T0504**
PART NAME BLOCK (블록)



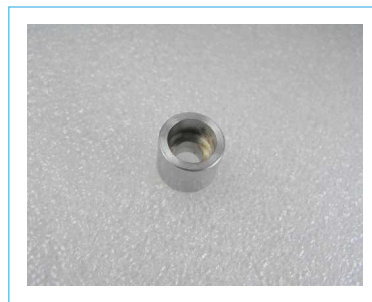
ORDER CODE **T0505**
PART NAME FILE_COVER (파일 커버)



ORDER CODE **T0506**
PART NAME CYL_PLATE (실린더 플레이트)



ORDER CODE **T0507**
PART NAME COLLAR (컬러)



ORDER CODE **T0508**
PART NAME STOPER (스토퍼)



ORDER CODE **T0509**
PART NAME BLOCK (블록)

Take Out Robot Parts



ORDER CODE	T0510
PART NAME	CYLINDER (실린더)



ORDER CODE	T0511
PART NAME	SPEED_CONTROL (스피드컨트롤)



ORDER CODE	T0512
PART NAME	SOCKETHEAD BOL (렌치볼트)



ORDER CODE	T0513
PART NAME	SHOCK_ABSORBER (쇼바)



ORDER CODE	T0514
PART NAME	B/K (브라켓)



ORDER CODE	T0515
PART NAME	B/K (브라켓)



ORDER CODE	T0516
PART NAME	B/K (브라켓)



ORDER CODE	T0517
PART NAME	FLEXIBLE_COUPLING (후렉시블 커플링)



ORDER CODE	T0518
PART NAME	FLEXIBLE_COUPLING (후렉시블 커플링)

TOPIV
Assembly unit

HIT

MACH

MACH-II

NEXIA

HYBRID

VECT



탑포 스윙타입 취출로봇

TOP IV Series

T06

TOP IV
Assembly unit

HiT

MACH

MACH-II

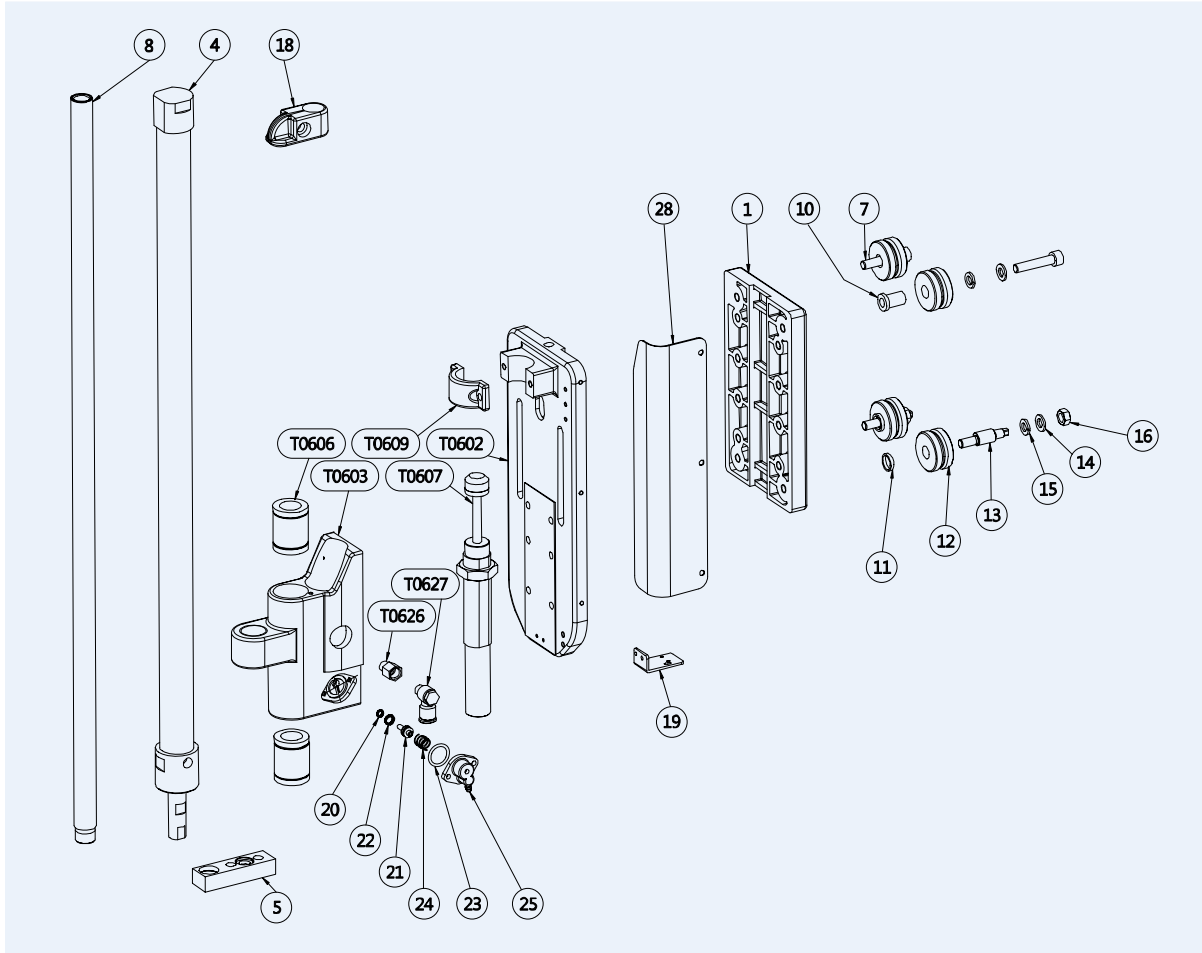
NEXiA

HYBRiD

VECT



Main & Sub arm unit



부품리스트

순번 (No)	주문코드 (ORDER CODE)	부품명 (PART NAME)	관리자코드 (HY-CODE)	비고 (NOTE)
1	T0601	HOLDER_PLATE_A(홀더플레이트A)	MS55TW45001ZB0	
2	T0602	HOLDER_PLATE_B(홀더플레이트B)	MS55TW45003PW0	
3	T0603	CYL_BLOCK(실린더블럭)	MS55TW45004PW0 MS75TW45004PW0	
4	T0604	CYLINDER(실린더)	PAXA3478905508 PAXA3478906508 PAXA3786425750	
5	T0605	B/K(브라켓)	MS55AT34402ZB0	
6	T0606	BALL_BUSH(볼부쉬)	PBSBLM20UU8888	

순번 (No)	주문코드 (ORDER CODE)	부품명 (PART NAME)	관리자코드 (HY-CODE)	비고 (NOTE)
7	T0607	SHOCK_ABSORBER(하강쇼바)	PSAKIEM14509CE	
8	T0608	SLIDE_SHAFT(슬라이드샤프트)	MS55TW45010MC0 MS65TW45010MC0 MS75TW45010MC0	
9	T0609	HOLDER(홀더)	MS55TW45008MDO	
10	T0610	BEARING-COLLAR(베어링컬러)	MS55TW45002ZB0	
11	T0611	COLLAR(컬러)	MS55TW45006ZB0	
12	T0612	BEARING(베어링)	MS55AT34103MC0	
13	T0613	SHAFT(샤프트)	MS55TW45005ZB0	
14	T0617	SOCKETHEAD BOLT(렌치볼트)	x	
15	T0618	STOPER_DOG(스토퍼)	MS55AT34007ZB0	
16	T0619	SENSOR_B/K_(센서브라켓)	MS55TW45009ZW0	
17	T0625	PISTON(안전/피스톤)	MS55AT34204ZB0	
18	T0626	동레듀샤	PAXBREDU181888	
19	T0627	FITTING(휘팅)	PAXFPH80818088	
20	T0628	CABLE_COVER(케이블커버)	MS55TW40005ZZ0	
21	T0629	CABLE_B/K(케이블브라켓)	MS55TW40006ZZ0	
22	T0630	CABLE_B/K(케이블브라켓)	MS55TW40001PW0	
23	T0631	END_B/K(HSP0180_1B)	PCVE1801200088	
24	T0632	C/V_LINK(HSP0180-1BN-37R)	PCVH1801B03788	
25	T0633	FITTING(휘팅)	PAXFEC12380888	
26	T0634	FITTING(휘팅)	PAXFL4N085PT14	
27	T0635	FITTING(휘팅)	PAXFL4N086PT14	

- TOP IV
Assembly unit
- HiT
- MACH
- MACH-II
- NEXIA
- HYBRID
- VECT

Take Out Robot Parts



ORDER CODE **T0601**
PART NAME HOLDER_PLATE_A (홀더플레이트)



ORDER CODE **T0602**
PART NAME HOLDER_PLATE_B (홀더플레이트)



ORDER CODE **T0603**
PART NAME CYL_BLOCK (실린더블럭)

Take Out Robot Parts

TOP-IV
Assembly unit

HIT

MACH

MACH-II

NEXIA

HYBRID

VECT



ORDER CODE **T0604**
PART NAME CYLINDER (실린더)



ORDER CODE **T0605**
PART NAME B/K (브라켓)



ORDER CODE **T0606**
PART NAME BALL_BUSH (볼부쉬)



ORDER CODE **T0607**
PART NAME SHOCK_ABSORBER (하강쇼버)



ORDER CODE **T0608**
PART NAME SLIDE_SHAFT (슬라이드샤프트)



ORDER CODE **T0609**
PART NAME HOLDER (홀더)



ORDER CODE **T0610**
PART NAME BEARING-COLLAR (베어링컬러)



ORDER CODE **T0611**
PART NAME COLLAR (컬러)



ORDER CODE **T0612**
PART NAME BEARING (베어링)



ORDER CODE **T0613**
PART NAME SHAFT (샤프트)



ORDER CODE **T0617**
PART NAME SOCKETHEAD BOLT (렌치볼트)



ORDER CODE **T0618**
PART NAME STOPER_DOG (스토퍼)

Take Out Robot Parts

TOP IV
Assembly unit

HiT

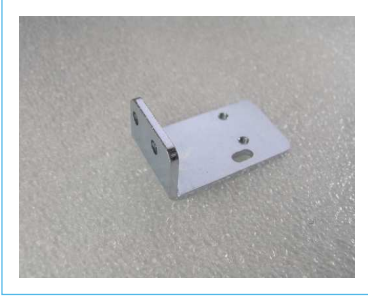
MACH

MACH-II

NEXIA

HYBRID

VECT



ORDER CODE **T0619**
PART NAME SENSOR_B/K_ (센서브라켓)



ORDER CODE **T0625**
PART NAME PISTON (안전/피스톤)



ORDER CODE **T0626**
PART NAME 동레듀샤



ORDER CODE **T0627**
PART NAME FITTING (휘팅)



ORDER CODE **T0628**
PART NAME CABLE_COVER (케이블커버)



ORDER CODE **T0629**
PART NAME CABLE_B/K (케이블브라켓)



ORDER CODE **T0630**
PART NAME CABLE_B/K (케이블브라켓)



ORDER CODE **T0631**
PART NAME END_B/K (HSP0180_1B)



ORDER CODE **T0632**
PART NAME C/V_LINK (HSP0180-1BN-37R)



ORDER CODE **T0633**
PART NAME FITTING (휘팅)



ORDER CODE **T0634**
PART NAME FITTING (휘팅)



ORDER CODE **T0635**
PART NAME FITTING (휘팅)



탑포 스윙타입 취출로봇

TOP IV Series

T07

TOP IV
Assembly unit

HiT

MACH

MACH-II

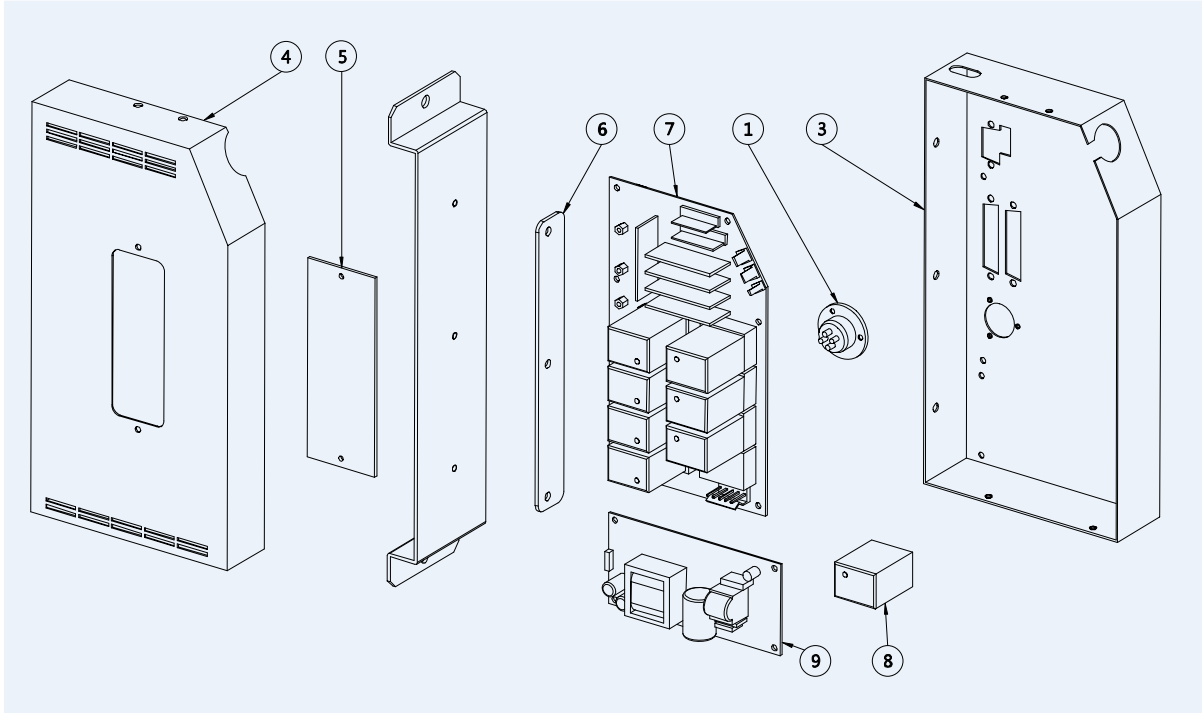
NEXIA

HYBRID

VECT



Control Box unit



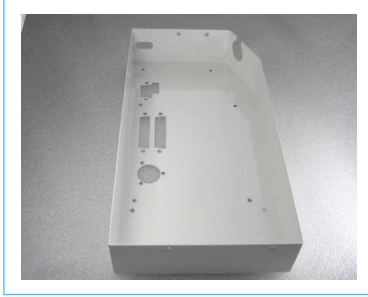
부품리스트

순번 (No)	주문코드 (ORDER CODE)	부품명 (PART NAME)	관리자코드 (HY-CODE)	비고 (NOTE)
1	T0701	CONNECTOR	X	
2	T0703	INTER_LOCK_BOX(컨트롤박스 커버)	MS55TW47001ZZ0	
3	T0704	COVER(컨트롤박스 커버)	MS55TW47002ZZ0	
4	T0705	COVER(아크릴커버)	MS55TW47003MC0	
5	T0706	CONT_SPACER(컨트롤박스 스페이서)	MS55TW47004ZZ0	
6	T0707	SC_BOARD(SC보드)	PBDS4SC0000000	
7	T0708	RELAY(릴레이))	PRLAMY2024V888	
8	T0709	SMPS(파워보드)	PSMAHN36S24NCE)	

Take Out Robot Parts



ORDER CODE	T0701
PART NAME	CONNECTOR



ORDER CODE	T0703
PART NAME	INTER_LOCK_BOX (컨트롤박스 커버)



ORDER CODE	T0704
PART NAME	COVER (컨트롤박스 커버)



ORDER CODE	T0705
PART NAME	COVER (아크릴커버)



ORDER CODE	T0706
PART NAME	CONT_SPACER (컨트롤박스 스페이서)



ORDER CODE	T0707
PART NAME	SC_BOARD (SC보드)



ORDER CODE	T0708
PART NAME	RELAY (릴레이)



ORDER CODE	T0709
PART NAME	SMPS (파워보드)

TOPIV
Assembly unit

HIT

MACH

MACH-II

NEXIA

HYBRID

VECT



탑포 스윙타입 취출로봇

TOP IV Series

T08

unit

HIT

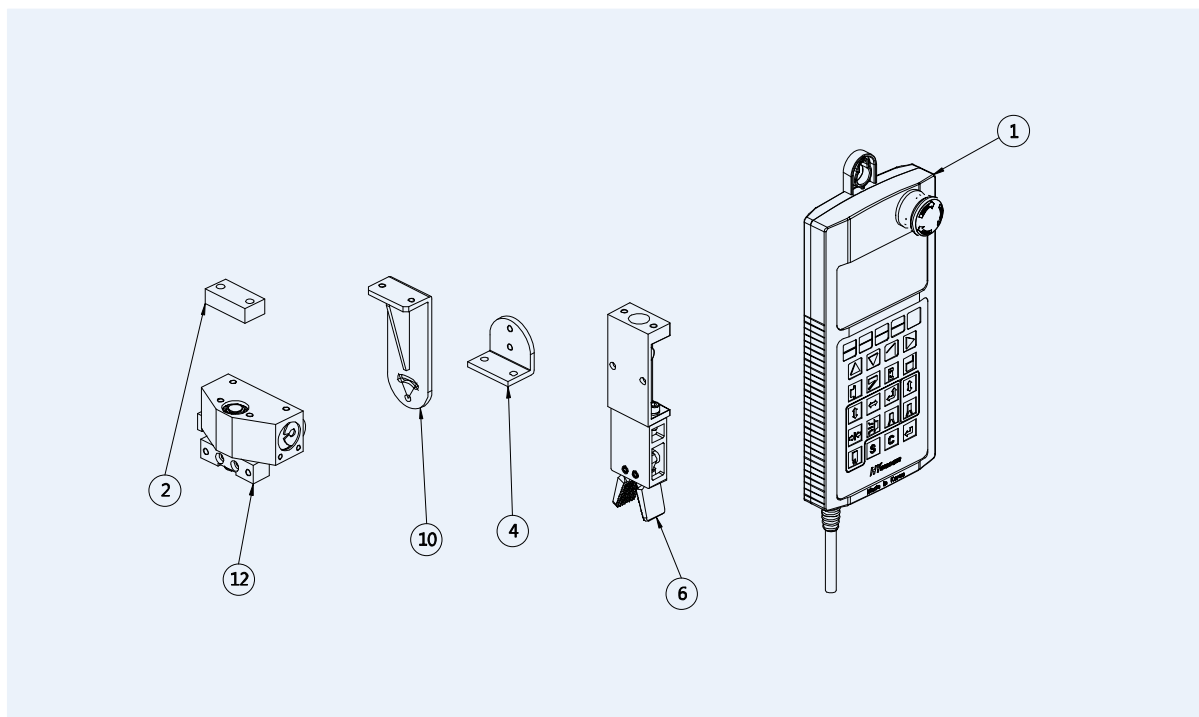
MACH

MACH-II

NEXIA

HYBRID

VECT



부품리스트

순번 (No)	주문코드 (ORDER CODE)	부품명 (PART NAME)	관리자코드 (HY-CODE)	비고 (NOTE)
1	T0801	Pendant_unit(리모컨)	MS55TW48100000	
2	T0802	BRACKET(블록)	MS55XT44001MC0	
3	T0803	GRIPPER_B/K_A(집게브라켓A)	MS55AT44004ZW0	
4	T0804	GRIPPER_B/K_B(집게브라켓B)	MS55AT34005ZW0	
5	T0805	CHUCK_ROT_UNIT(반전유닛)	MS55XT34100000	
6	T0806	GRIPPER_ASSY(집게)	MS55AT34300001	



Take Out Robot Parts



ORDER CODE	T0801
PART NAME	PENDANT_UNIT (리모컨)



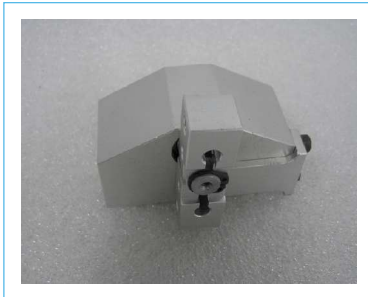
ORDER CODE	T0802
PART NAME	BRACKET (블록)



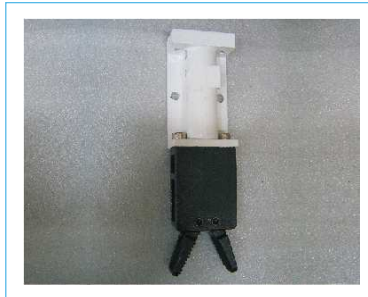
ORDER CODE	T0803
PART NAME	GRIPPER_B/K_A (집게브라켓A)



ORDER CODE	T0804
PART NAME	GRIPPER_B/K_B (집게브라켓B)



ORDER CODE	T0805
PART NAME	CHUCK_ROT_UNIT (반전유닛)



ORDER CODE	T0806
PART NAME	GRIPPER_ASSY (집게)

TOPiV
Assembly unit

HiT

MACH

MACH-II

NEXiA

HYBRiD

VECT

