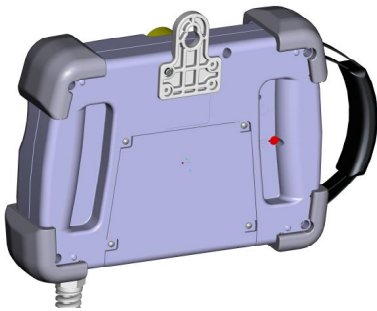




**HYNC-700**



**◆ WHAT IS HYNC-700 ?**

- SIMPLIFIED WINDOWS BASED USER INTERFACE COLOR TOUCH SCREEN ROBOT CONTROLLER FOR PLASTICS INJECTION MOLDING AUTOMATION.

**◆ HYNC-700 DESCRIPTION**

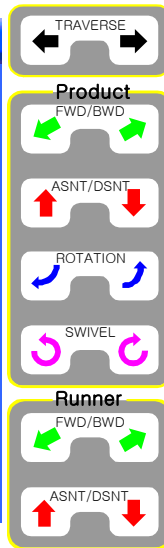
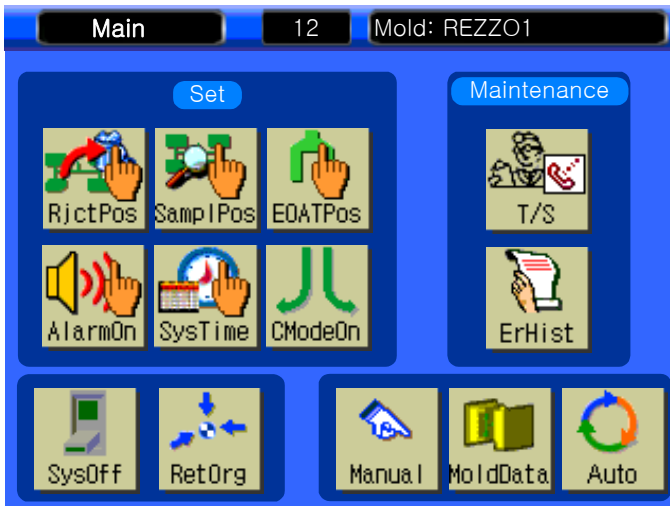
- KNOW-HOW ACCUMULATED RESULT OF INJECTION MOLDING ROBOT AUTOMATION SINCE 1980.
- CUSTOMER(FIELD TECHNICIAN) ORIENTED EASY/TEACH ROBOT PROGRAMMING REALIZATION FOR INJECTION MOLDING AUTOMATION APPLICATION.
- SIMPLIFIED AND MULTI TASKING ROBOT CONTROLLER , VACUUM, CHUCKING, GRIPPING UNLOADING , INSERT MOLDING , PALLETIZING AND PALLETIZED INSERT LOADING.
- WINDOWS BASED COLOR GRAPHIC USER INTERFACE WITH TOUCH SCREEN

**◆ HYNC-700 APPEARANCE**

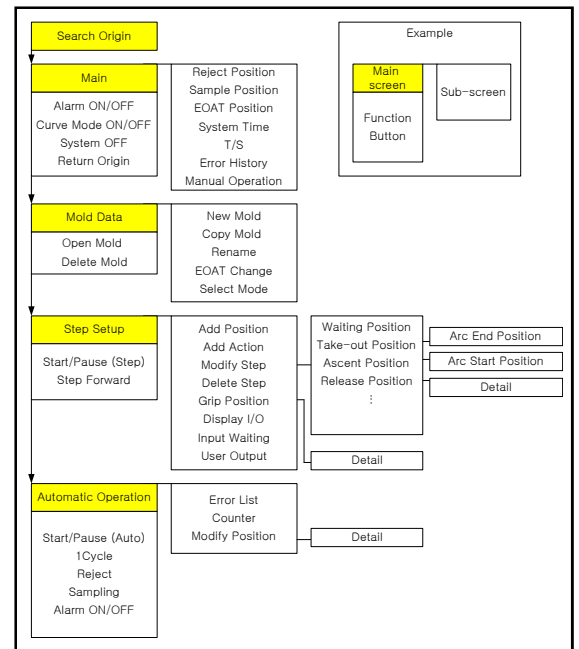
- HIGH STRENGTH RUGGED PLASTIC CASE
- CONER GUARD FOR SHOCK PROTECTION
- EASY SETUP FOR HAND MOVABLE TOUCH SCREEN
- MORE FLOOR SPACE WITH INSTALLED CONTROL HARDWARE ON ROBOT BODY.

**◆ HYNC-700 SPECIALTY**

- PLAY BACK ROBOT MOTION CONTROL MODE WITH BASIC 4 LOCATION ( WAITING POSITION, TAKE OUT POSITION, UP POSITION, AND UNLOADING POSITION )
- MOLD MANAGEMENT PROGRAM HELP TO MINIMIZE MOLD SETUP TIME.
- ADJUSTABLE SPEED JOG BUTTON REALIZE EASY POSITION SETUP.
- SPEED, TIMER ADJUSTABLE IN AUTO MODE.
- INPUT / OUTPUT / INTERLOCK LED MONITORING
- LINEAR CURVE ACCELERATION AND DECELERATION REALIZE FAST AND STABLE OPERATION
- PALLETIZING AND INSERT LOADING PROGRAM INCLUDE FOR EASY SETUP
- ROBOTIC INDUSTRY SAFETY CIRCUIT WITH SPI INTERFACE CIRCUIT INCLUDED



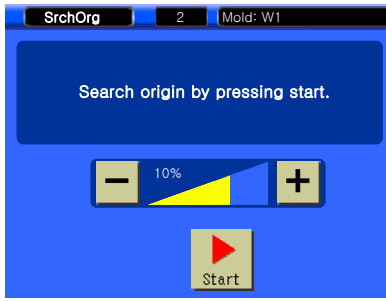
**◆ PROGRAM STRUCTURE FLOW**



**◆ GENERAL DESCRIPTION**

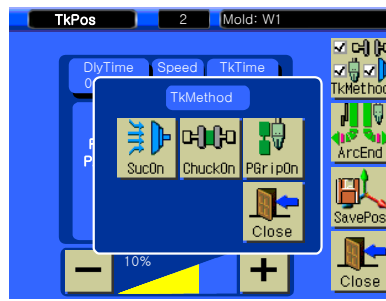
- HYNC-700 REALIZED EASY AND SIMPLIFIED MOTION CONTROL FOR SOPHISTICATED INJECTION MOLDING ROBOT AUTOMATION AND PROVIDES COLOR TOUCH SCREEN ,SERVO JOG BUTTON, AND PLAY BACK STEP BY STEP MOTION CONTROL. FUNCTION AND RELIABILITY APPROVED BY NORTH AMERICA AUTOMOTIVE MOLDERS LIKE SUPPLIER FOR FORD, CHRYSLER AND HYUNDAI, KIA, SAMSUNG AND LG ELECTRONICS.





### ◆ SERVO ORIGIN

INITIAL SCREEN FOR SEARCHING ORIGIN POINT FOR SERVO MOTOR. AS MOTION ORDER OF ASCENT, KICK, TRAVERSE. POSSIBLE TO KEEP THE ROBOT AWAY FROM CRASHING TO THE MOLD AND MACHINE WITH JOG BUTTON BEFORE SEARCHING ORIGIN.



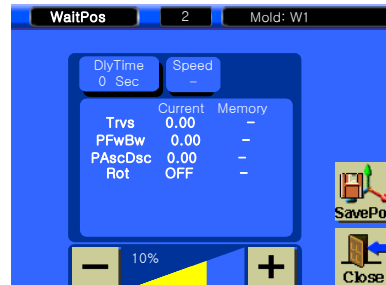
### ◆ TAKE OUT METHOD SCREEN

TAKE OUT METHOD CAN BE SELECTED BY SUCTION, CHUCKING, GRIPPING WITH SIMPLIFIED ICON. ALSO SPARE OUTPUT CAN BE SELECTED DURING ANY STEP.



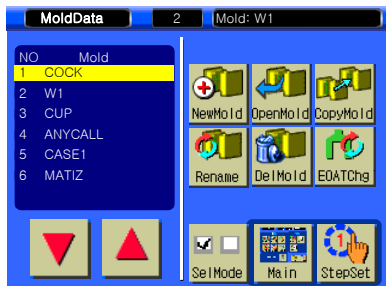
### ◆ MAIN SCREEN

EASY ROBOT MAINTENANCE, SETUP AND SAMPLE COLLECTION. MOLD MANAGEMENT AND SHOWING AUTO MODE FOR FORE WORKING JOB AFTER SEARCHING ORIGIN OF SERVO MOTOR. ERROR HISTROY LIST INCLUDED



### ◆ POSITION SELECTION

EOAT POSITION CAN BE SELECTED BY MEMBRANE JOG BUTTON WITH EASY SPEED ADJUSTMENT, ALSO ADDITIONAL POSTION CAN BE ADDED EASILY WITH "ADD POSITON" ICON.



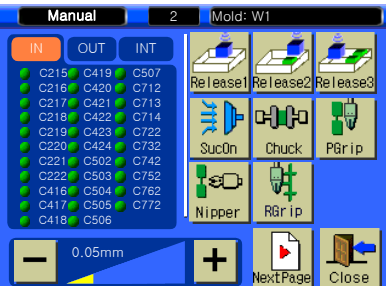
### ◆ MOLD MANAGEMENT

MOLD PROFRAMS CAN BE MADE, OPENED, SAVED, RESTORED, COPIED, EDITED EASILY. CONNECTED TO THE STEP SETTING MODE. MOLD PROGRAM CAN BE STORED UP TO 99 WITH STANDARD 20 STEP SIZE ( 1 MOLD PROGRAM



### ◆ PALLETIZING SCREEN

FROM ONE CAVITY TO MULTY CAVITY PRODUCT CAN BE PALLETIZED FROM DEFAULT RELEASE POSTION WITH ADDING PITCH AND NUMBERS BY TRAVERSE, KICK, AND ASCENT LAYER AT THE MAIN AND SUB POSITION ( RELEASE 2,3,4 NEED OPTIONAL RELEASE VALVE )



### ◆ MANUAL MODE

VACUUM, CHUCKING, GRIP, NIPPER CAN BE MANUALLY OPERATED. IN / OUT / INTERLOCK SIGNAL CAN BE MORNIOTORED IN THE SCREEN. ON THE RIGHT SIDE, JOG MEMBRANE BUTTON MOVE THE ROBOT ARM TO THE REQUIRED POSTION.



### ◆ INSERT GRIP POSITION

THIS SCREEN IS FOR MULTI CAVITY INSERT LOADING APPLICATION WITH TRAVERSE PITCH TO KICK PITCH STROKE. SPECIALLY DESIGNED FOR PRE-INSERT MOLDING APPLICATION.



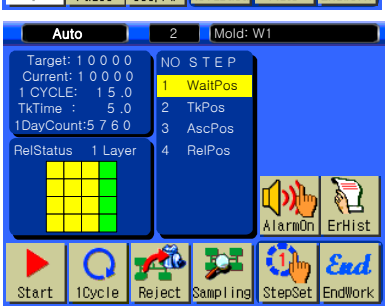
### ◆ STEP SCREEN

STEP SELECTION SCREEN CAN ADD EACH STEP POSITION, MOTION, EDIT WITH STANDARD 4 MAIN POSTION EASILY, SIMPLIFIED STEP BY STEP MOTION SYSTEM. STEP CAN BE ADDED WITH ADD POSITON AND MOTION UP TO 80 STEPS.



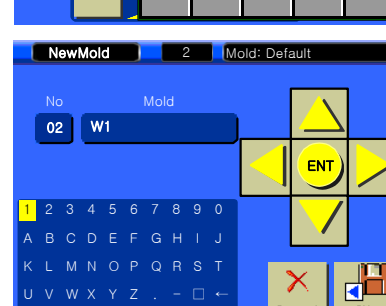
### ◆ DELAY TIME INPUT

DELAY TIME CAN STABILIZE THE OPERATION OF EACH MOTION IN THE AUTO MODE



### ◆ AUTO SCREEN

TARGET CYCLE, CURRENT CYCLE AND UNLOADING PALLETIZING, INSERT LOADING PALLETIZING, MOTION SPEED AND DELAY TIME ADJUSTMENT, SAMPLING FOR INSPECTION. AND MORE FUNCTION



### ◆ MOLD INPUT SCREEN

EACH MOLD NAME CAN BE INPUT BY NUMBER AND ENGLISH TEXT FOR EACH MAINTENANCE.



## HYROBOTICS CORP

5319 Brown Ave. SAINT LOUIS MO 63120. USA

TEL : 1-314-574-5777, FAX : 1-866-232-5594. WWW.HYROBOTS.COM