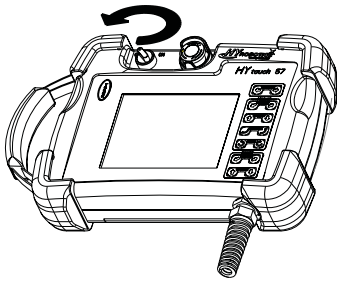


4.3 Kick Arm

4.3.1 Timing belt replacement for Kick Arm

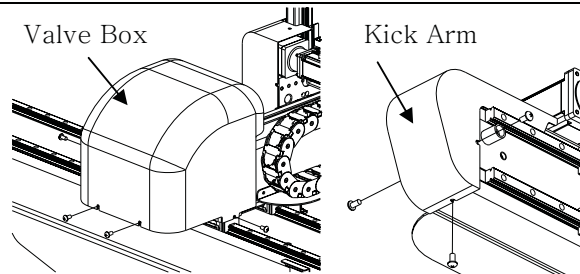
참 고

- This chapter describes for timing belt replacement for Main kick arm, if it requires for runner sub arm, follow same step.



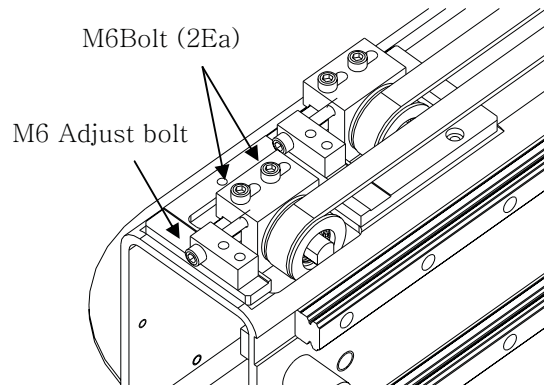
STEP 1

Turn of Robot and IMM and Lock out and tag out for machine.



STEP 2

Remove Valve box. And cover for kick arm

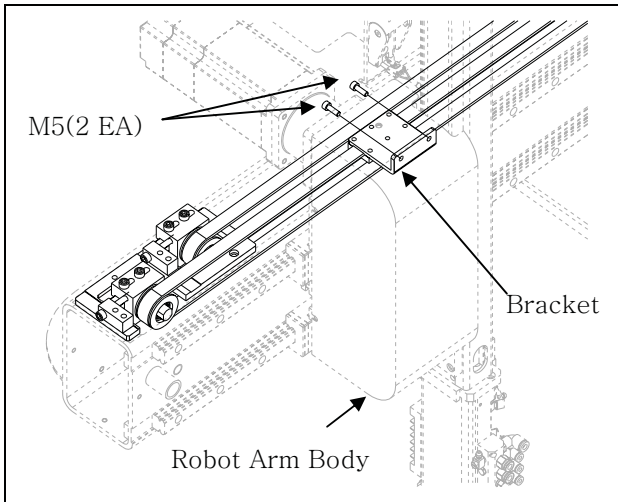


STEP 3

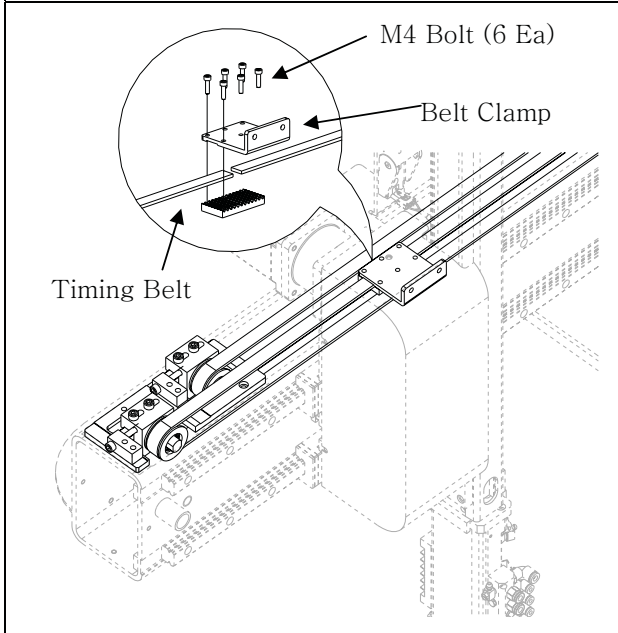
Loosen M6 bolts on Passive pulley

STEP 4

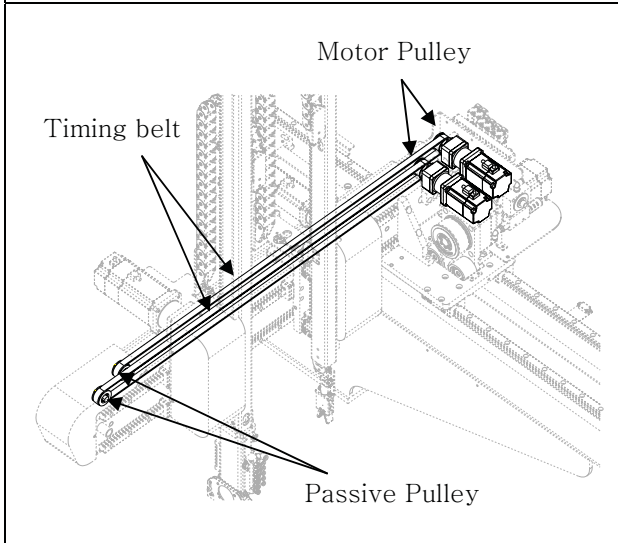
Loose M6 Adjust bolt and loose the tension of timing belt



STEP 5
Remove 2 of M5 bolts and disassemble robot arm body and belt clamp.



STEP 6
Remove 6 of M4 , Disassemble from belt with belt clasper.

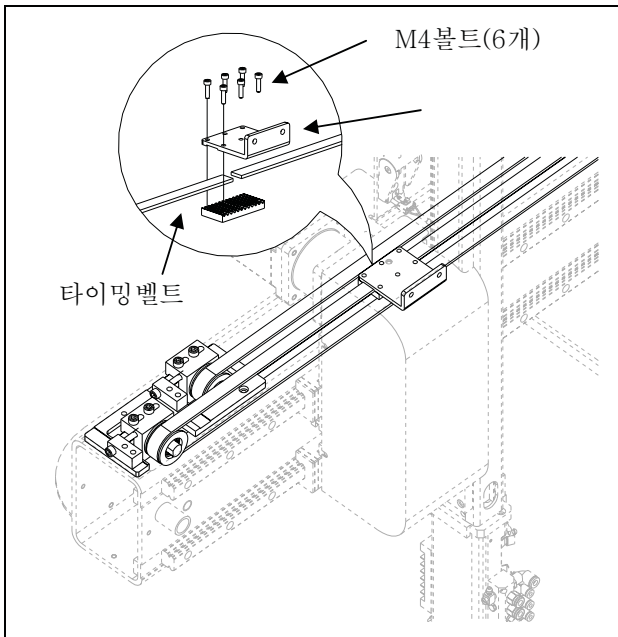
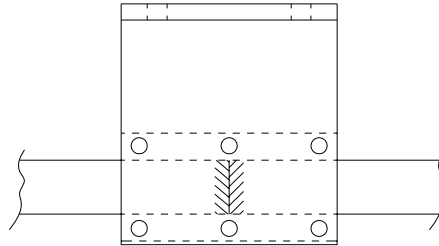


STEP 7
Replace timing belt with new one as it was before

중심 클램퍼

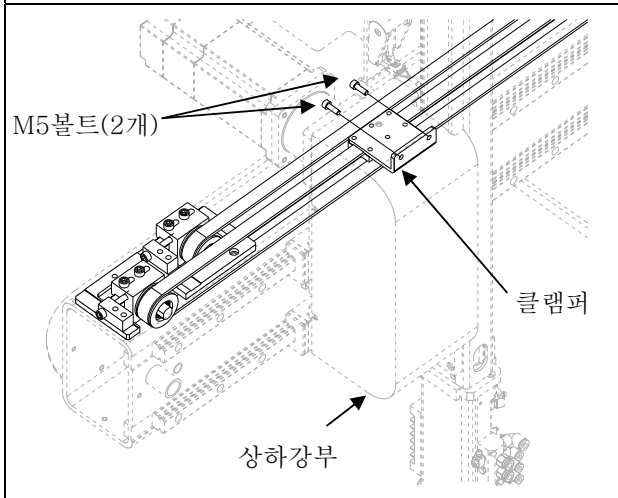
- Place end of timing belt to the center of clamp.

▲ 주의



STEP 8

Install timing belt between belt clamp and robot body and install 6 of M4 bolts securely.



STEP 9

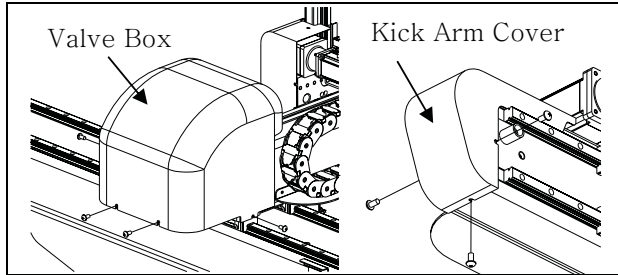
Install 2 of M5 bolts back. Secure connection

STEP 10

Adjust timing belt tension

참 고

- Adjust timing belt tension with <3.2.5 Timing belt tension for Kick Arm >.



STEP 11

Install back valve cover and kick arm cover.